

PRO. CURVE NO. 16 FOR UP LINE (RHS)
 R = 460 m, D = 3.8'
 A = 70° 17' 10"
 TL = 323.810 m
 CL = 564.293 m
 TRL = 80 m
 SE = 120 mm
 SHIFT = 58 mm
 PSR = 90 kmph

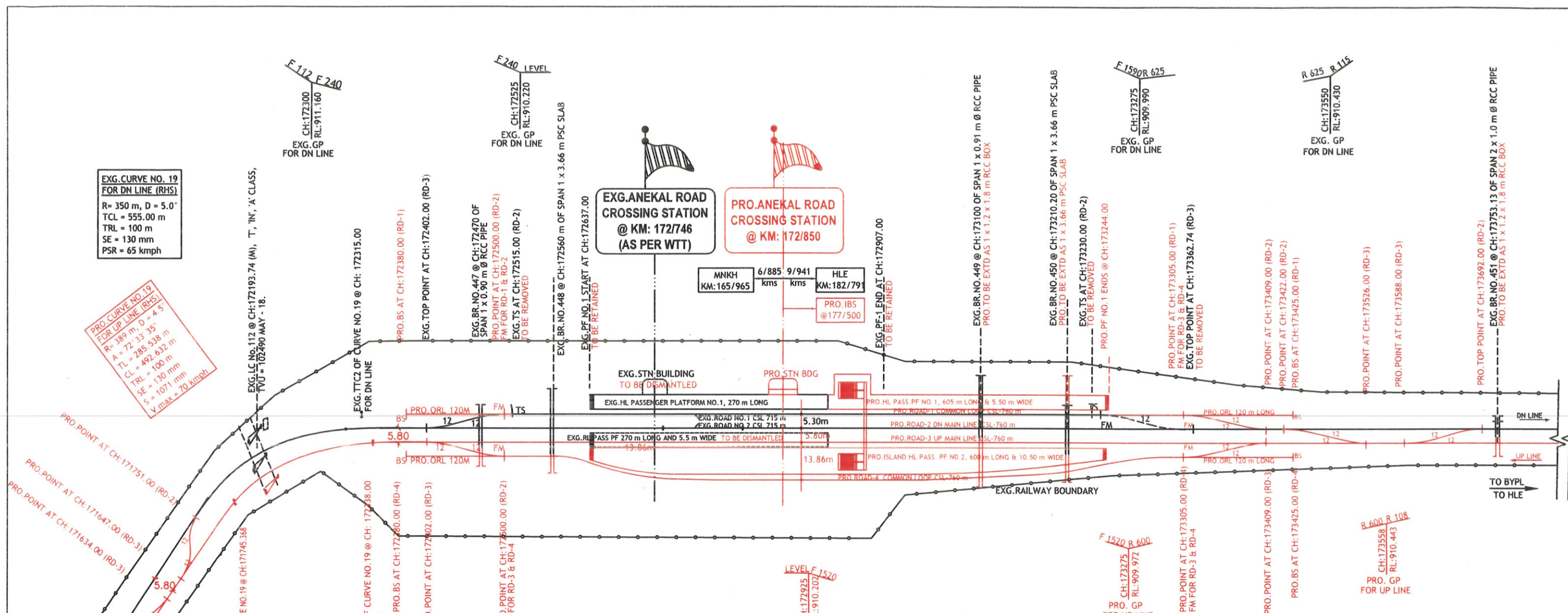
EXG. CURVE NO. 16 FOR DN LINE (LHS)
 R = 437.5 m, D = 4.0'
 TCL = 540 m
 TRL = 90 m
 SE = 125 mm
 PSR = 90 kmph

**MARANAYAKANA HALLI
 EXG. CROSSING STATION
 @ KM: 165/965**

SOUTH WESTERN RAILWAY	
K RIDE	RAIL INFRASTRUCTURE DEVELOPMENT COMPANY (KARNATAKA) LIMITED
BENGALURU DIVISION	
SALEM - YESVANTPUR SECTION	
DOUBLING OF BG TRACK BETWEEN BAIYAPPANAHALLI 'A' PANEL AND HOSUR STATIONS PROPOSED YARD ARRANGEMENTS AT	
MARANAYAKANAHALLI	
CONCEPTUAL PLAN	
(NOT TO SCALE)	

(Signature)
 11/8/21
 (H.M.DINESH)
 CTPM / SWR / UBL

(Signature)
 13/8/21
 (H.GULASHFAQUE MOHD.)
 CPDE / SWR / UBL



EXG. CURVE NO. 19 FOR DN LINE (RHS)
 R= 350 m, D = 5.0'
 TCL = 555.00 m
 TRL = 100 m
 SE = 130 mm
 PSR = 65 kmph

PRO. CURVE NO. 19 FOR UP LINE (RHS)
 R= 389 m, D = 4.5'
 A = 72.33 35'
 TL = 285.538 m
 CL = 492.632 m
 TRL = 100 m
 SE = 130 mm
 S = 1071 mm
 V max = 70 kmph

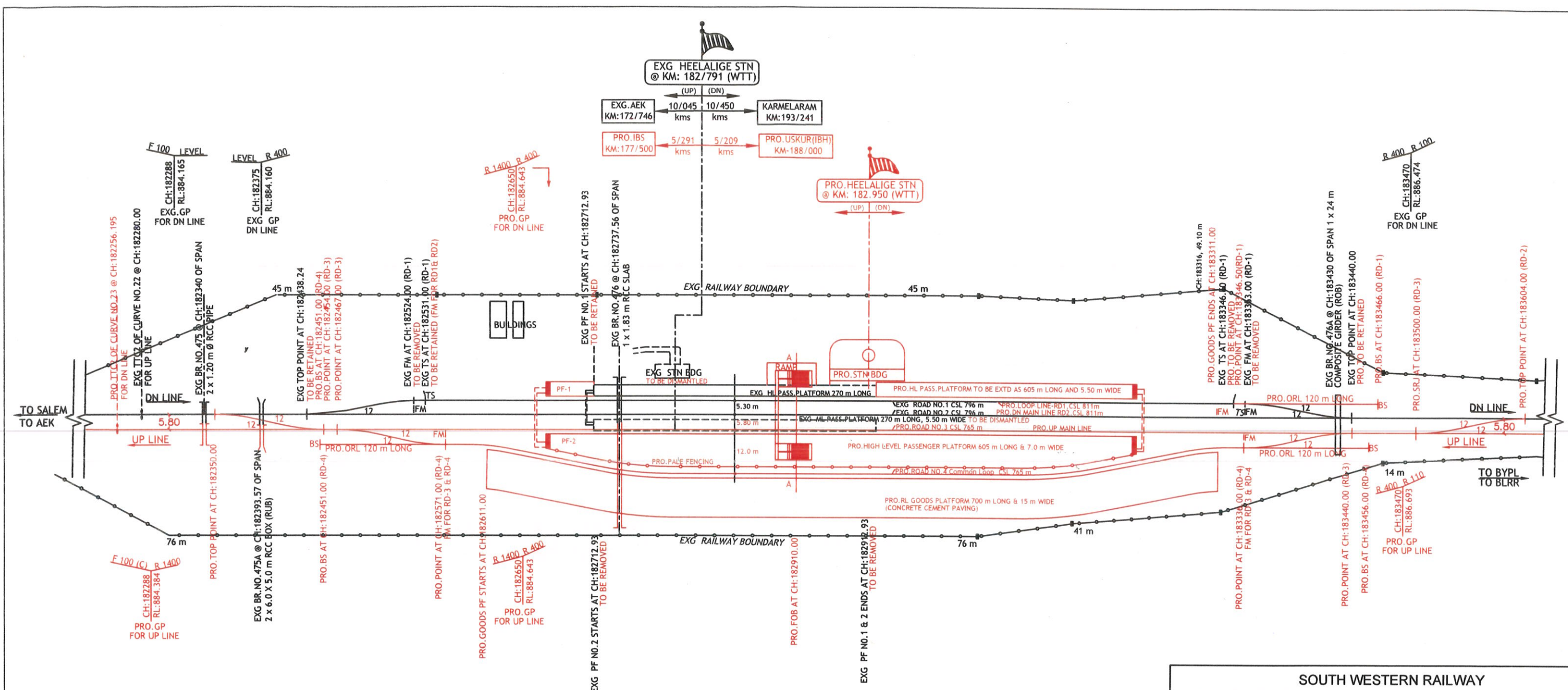
(Signature)
 11/8/21
 (H.M. DINESH)

CTPM / SWR / UBL

(Signature)
 13/8/21
 (H. GUL ASHFAQUE MOHD.)

CPDE / SWR / UBL

SOUTH WESTERN RAILWAY	
K RIDE	RAIL INFRASTRUCTURE DEVELOPMENT COMPANY (KARNATAKA) LIMITED
BENGALURU DIVISION	
SALEM - YESVANTPUR SECTION	
DOUBLING OF BG TRACK BETWEEN BAIYAPPANAHALLI 'A' PANEL AND HOSUR STATIONS PROPOSED YARD ARRANGEMENTS AT	
ANEKAL ROAD	
CONCEPTUAL PLAN	
(NOT TO SCALE)	



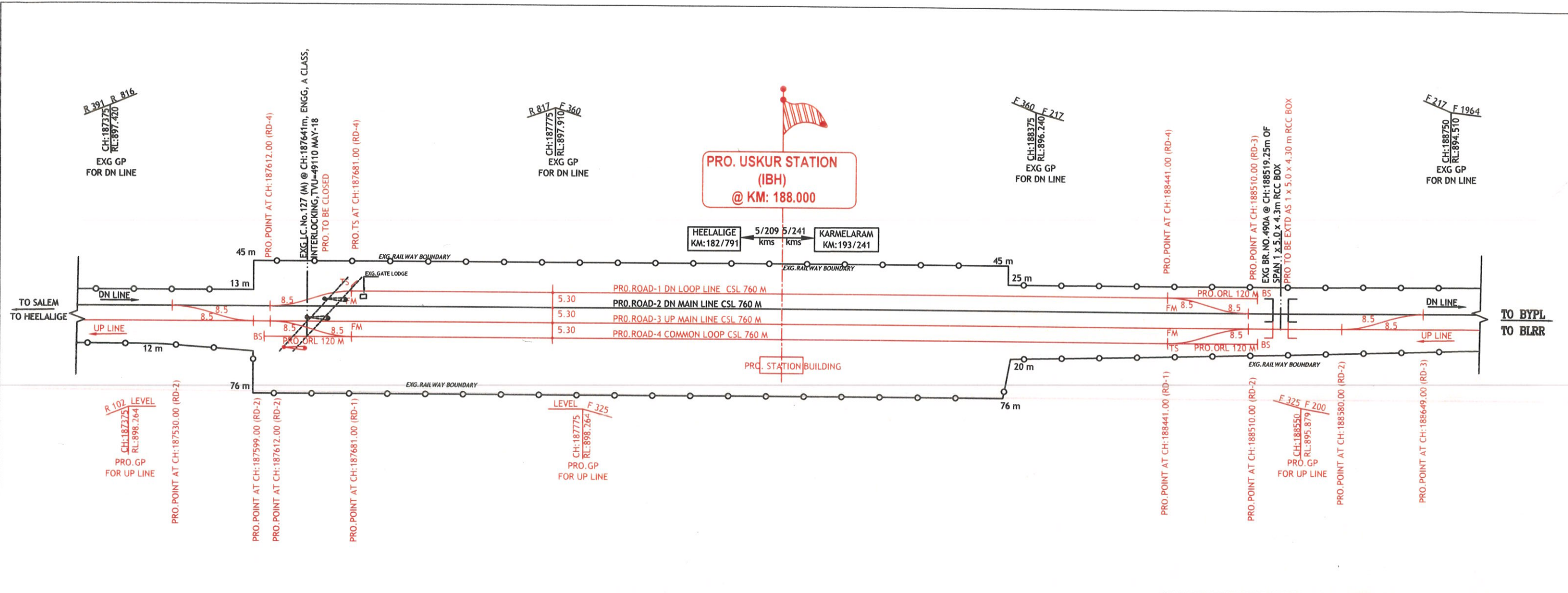
[Signature]
11/8/21
(H.M.DINESH)

CTPM / SWR / UBL

[Signature]
11/8/21
(H.GULASHFAQUE MOHD.)

CPDE / SWR / UBL

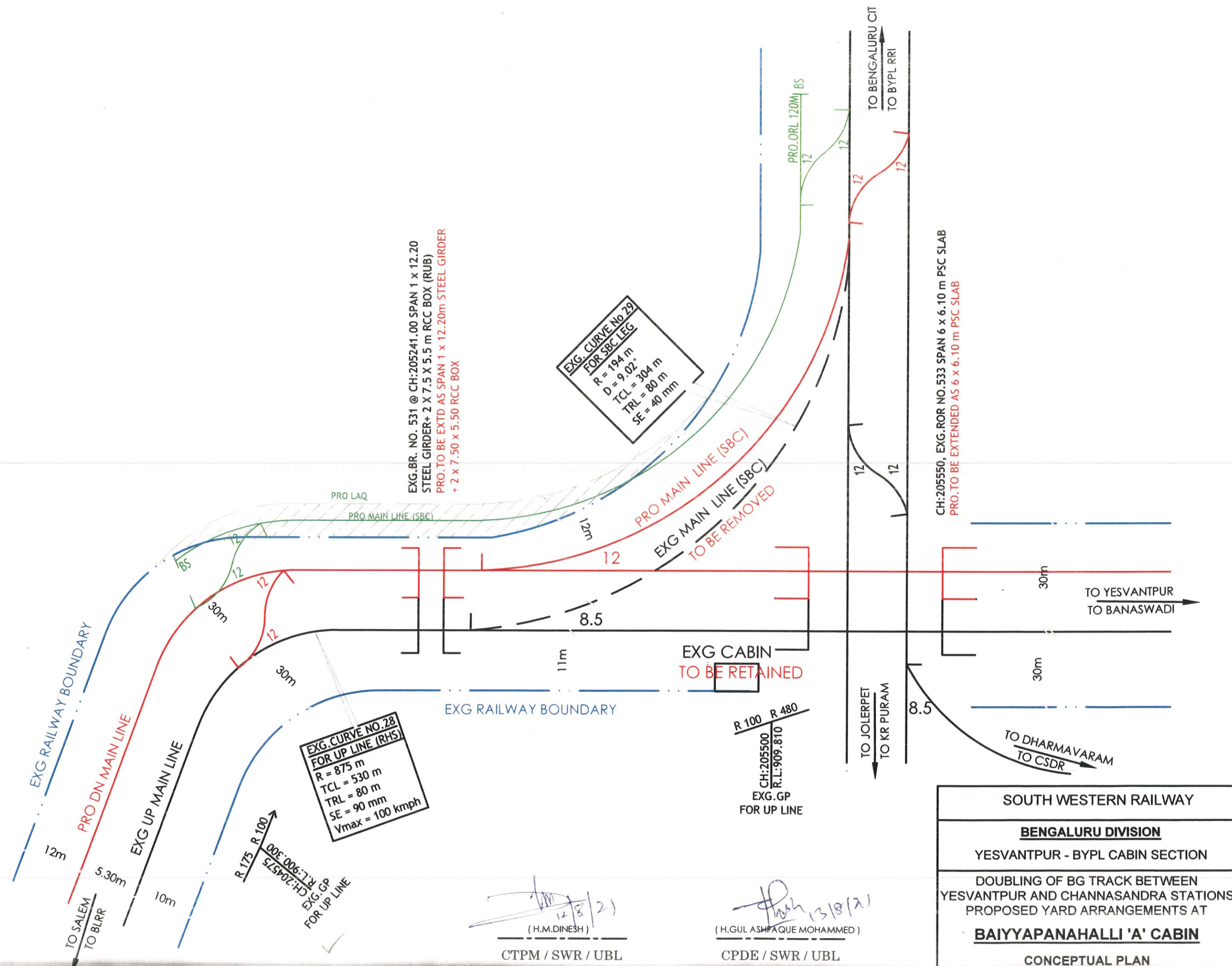
SOUTH WESTERN RAILWAY	
K RIDE	RAIL INFRASTRUCTURE DEVELOPMENT COMPANY (KARNATAKA) LIMITED
BENGALURU DIVISION	
SALEM - YESVANTPUR SECTION	
DOUBLING OF BG TRACK BETWEEN BAIYAPPANAHALLI 'A' PANEL AND HOSUR STATIONS PROPOSED YARD ARRANGEMENTS AT	
HEELALIGE	
CONCEPTUAL PLAN	
(NOT TO SCALE)	



(Signature)
 11/8/21
 (H.M.DINESH)
 CTPM / SWR / UBL

(Signature)
 13/8/21
 (H.GULASHFAQUE MOHD.)
 CPDE / SWR / UBL

SOUTH WESTERN RAILWAY	
K RIDE	RAIL INFRASTRUCTURE DEVELOPMENT COMPANY (KARNATAKA) LIMITED
BENGALURU DIVISION	
SALEM - YESVANTPUR SECTION	
DOUBLING OF BG TRACK BETWEEN BAIYAPPANAHALLI 'A' PANEL AND HOSUR STATIONS PROPOSED YARD ARRANGEMENTS AT	
USKUR	
CONCEPTUAL PLAN	
(NOT TO SCALE)	



(Signature)
 12/8/21
 (H.M.DINESH)
 CTPM / SWR / UBL

(Signature)
 13/8/21
 (H.GUL ASHFAQE MOHAMMED)
 CPDE / SWR / UBL

SOUTH WESTERN RAILWAY

BENGALURU DIVISION

YESVANTPUR - BYPL CABIN SECTION

DOUBLING OF BG TRACK BETWEEN YESVANTPUR AND CHANNASANDRA STATIONS PROPOSED YARD ARRANGEMENTS AT

BAIYYAPANAHALLI 'A' CABIN

CONCEPTUAL PLAN