

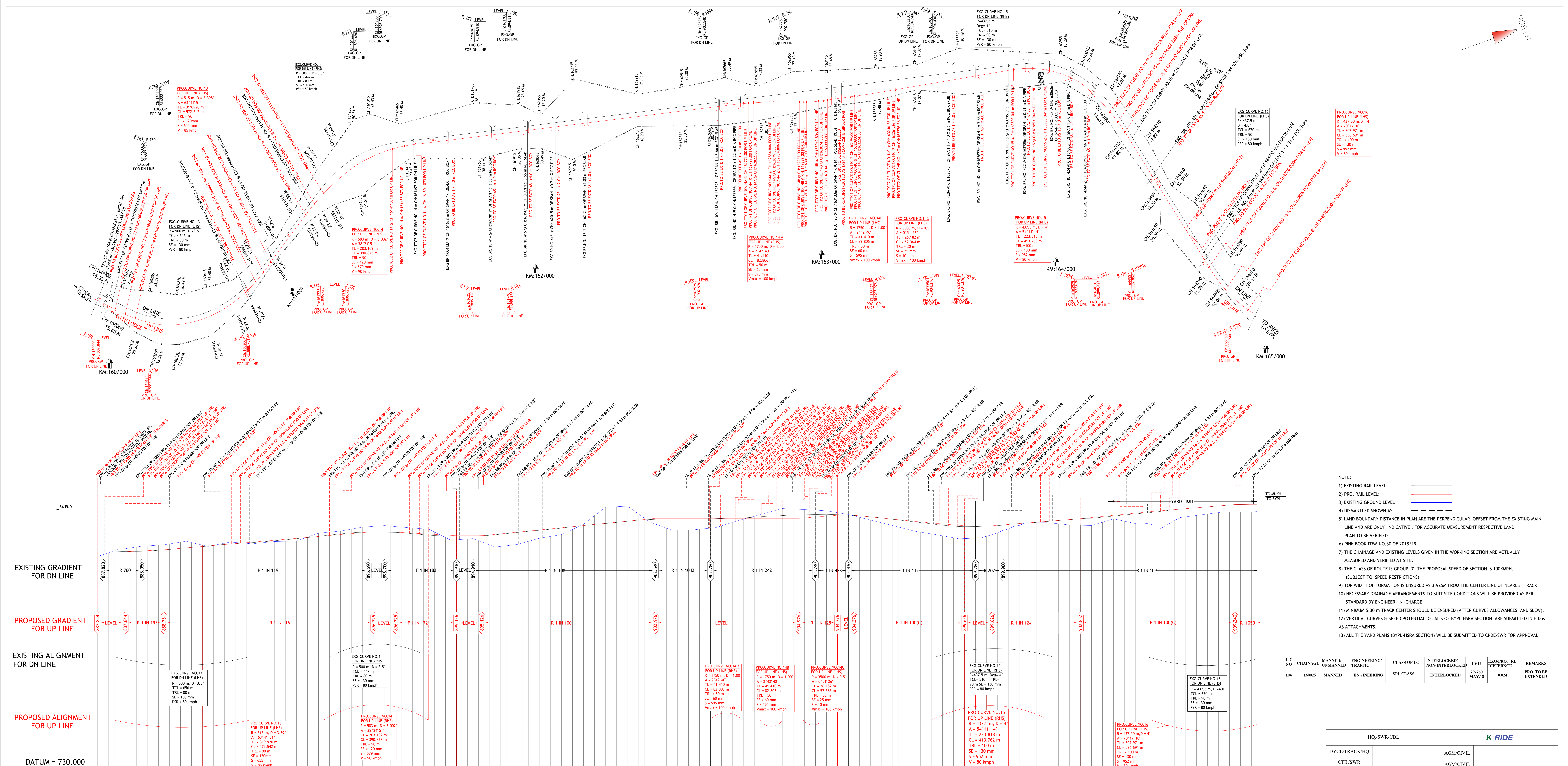
- NOTE:
- EXISTING RAIL LEVEL: ———
  - PRO. RAIL LEVEL: ———
  - EXISTING GROUND LEVEL: ———
  - DISMANTLED SHOWN AS: - - - - -
  - LAND BOUNDARY DISTANCE IN PLAN ARE THE PERPENDICULAR OFFSET FROM THE EXISTING MAIN LINE AND ARE ONLY INDICATIVE. FOR ACCURATE MEASUREMENT RESPECTIVE LAND PLAN TO BE VERIFIED.
  - PINK BOOK ITEM NO.30 OF 2018/19.
  - THE CHAINAGE AND EXISTING LEVELS GIVEN IN THE WORKING SECTION ARE ACTUALLY MEASURED AND VERIFIED AT SITE.
  - THE CLASS OF ROUTE IS GROUP 'D'. THE PROPOSAL SPEED OF SECTION IS 100KMPH. (SUBJECT TO SPEED RESTRICTIONS)
  - TOP WIDTH OF FORMATION IS ENSURED AS 3.925M FROM THE CENTER LINE OF NEAREST TRACK.
  - NECESSARY DRAINAGE ARRANGEMENTS TO SUIT SITE CONDITIONS WILL BE PROVIDED AS PER STANDARD BY ENGINEER-IN-CHARGE.
  - MINIMUM 5.30M TRACK CENTER SHOULD BE ENSURED (AFTER CURVES ALLOWANCES AND SLEW).
  - VERTICAL CURVES & SPEED POTENTIAL DETAILS OF BYPL-HSRA SECTION ARE SUBMITTED IN E-Das AS ATTACHMENTS.
  - ALL THE YARD PLANS (BYPL-HSRA SECTION) WILL BE SUBMITTED TO CPDE-SWR FOR APPROVAL.

L.C. NO	CHAINAGE	MANNED/UNMANNED	ENGINEERING/TRAFFIC	CLASS OF LC	INTERLOCKED/ NON-INTERLOCKED	TVU	EXG.PRO. RL DIFFERENCE	REMARKS
104	160025	MANNED	ENGINEERING	SPL CLASS	INTERLOCKED	297250 MAY.18	0.024	PRO. TO BE EXTENDED

DATUM = 730.000

TRACK CENTRE	DIFFERENCE OF RL (= PRL - ERL)	PRO. RAIL LEVEL FOR UP LINE	EXG. RAIL LEVEL FOR DN LINE	BANK / CUTTING	EXG. FORMATION LEVEL FOR DN LINE	PRO. FORMATION LEVEL FOR UP LINE	GROUND LEVEL	CHAINAGE
15727.5	0.000	894.218	893.890	0.328	0.000	894.218	893.890	15727.5
15730.0	0.000	894.218	893.890	0.328	0.000	894.218	893.890	15730.0
15732.5	0.000	894.218	893.890	0.328	0.000	894.218	893.890	15732.5
15735.0	0.000	894.218	893.890	0.328	0.000	894.218	893.890	15735.0
15737.5	0.000	894.218	893.890	0.328	0.000	894.218	893.890	15737.5
15740.0	0.000	894.218	893.890	0.328	0.000	894.218	893.890	15740.0
15742.5	0.000	894.218	893.890	0.328	0.000	894.218	893.890	15742.5
15745.0	0.000	894.218	893.890	0.328	0.000	894.218	893.890	15745.0
15747.5	0.000	894.218	893.890	0.328	0.000	894.218	893.890	15747.5
15750.0	0.000	894.218	893.890	0.328	0.000	894.218	893.890	15750.0
15752.5	0.000	894.218	893.890	0.328	0.000	894.218	893.890	15752.5
15755.0	0.000	894.218	893.890	0.328	0.000	894.218	893.890	15755.0
15757.5	0.000	894.218	893.890	0.328	0.000	894.218	893.890	15757.5
15760.0	0.000	894.218	893.890	0.328	0.000	894.218	893.890	15760.0
15762.5	0.000	894.218	893.890	0.328	0.000	894.218	893.890	15762.5
15765.0	0.000	894.218	893.890	0.328	0.000	894.218	893.890	15765.0
15767.5	0.000	894.218	893.890	0.328	0.000	894.218	893.890	15767.5
15770.0	0.000	894.218	893.890	0.328	0.000	894.218	893.890	15770.0
15772.5	0.000	894.218	893.890	0.328	0.000	894.218	893.890	15772.5
15775.0	0.000	894.218	893.890	0.328	0.000	894.218	893.890	15775.0
15777.5	0.000	894.218	893.890	0.328	0.000	894.218	893.890	15777.5
15780.0	0.000	894.218	893.890	0.328	0.000	894.218	893.890	15780.0
15782.5	0.000	894.218	893.890	0.328	0.000	894.218	893.890	15782.5
15785.0	0.000	894.218	893.890	0.328	0.000	894.218	893.890	15785.0
15787.5	0.000	894.218	893.890	0.328	0.000	894.218	893.890	15787.5
15790.0	0.000	894.218	893.890	0.328	0.000	894.218	893.890	15790.0
15792.5	0.000	894.218	893.890	0.328	0.000	894.218	893.890	15792.5
15795.0	0.000	894.218	893.890	0.328	0.000	894.218	893.890	15795.0
15797.5	0.000	894.218	893.890	0.328	0.000	894.218	893.890	15797.5
15800.0	0.000	894.218	893.890	0.328	0.000	894.218	893.890	15800.0
15802.5	0.000	894.218	893.890	0.328	0.000	894.218	893.890	15802.5
15805.0	0.000	894.218	893.890	0.328	0.000	894.218	893.890	15805.0
15807.5	0.000	894.218	893.890	0.328	0.000	894.218	893.890	15807.5
15810.0	0.000	894.218	893.890	0.328	0.000	894.218	893.890	15810.0
15812.5	0.000	894.218	893.890	0.328	0.000	894.218	893.890	15812.5
15815.0	0.000	894.218	893.890	0.328	0.000	894.218	893.890	15815.0
15817.5	0.000	894.218	893.890	0.328	0.000	894.218	893.890	15817.5
15820.0	0.000	894.218	893.890	0.328	0.000	894.218	893.890	15820.0
15822.5	0.000	894.218	893.890	0.328	0.000	894.218	893.890	15822.5
15825.0	0.000	894.218	893.890	0.328	0.000	894.218	893.890	15825.0
15827.5	0.000	894.218	893.890	0.328	0.000	894.218	893.890	15827.5
15830.0	0.000	894.218	893.890	0.328	0.000	894.218	893.890	15830.0
15832.5	0.000	894.218	893.890	0.328	0.000	894.218	893.890	15832.5
15835.0	0.000	894.218	893.890	0.328	0.000	894.218	893.890	15835.0
15837.5	0.000	894.218	893.890	0.328	0.000	894.218	893.890	15837.5
15840.0	0.000	894.218	893.890	0.328	0.000	894.218	893.890	15840.0
15842.5	0.000	894.218	893.890	0.328	0.000	894.218	893.890	15842.5
15845.0	0.000	894.218	893.890	0.328	0.000	894.218	893.890	15845.0
15847.5	0.000	894.218	893.890	0.328	0.000	894.218	893.890	15847.5
15850.0	0.000	894.218	893.890	0.328	0.000	894.218	893.890	15850.0
15852.5	0.000	894.218	893.890	0.328	0.000	894.218	893.890	15852.5
15855.0	0.000	894.218	893.890	0.328	0.000	894.218	893.890	15855.0
15857								





- NOTE:
- 1) EXISTING RAIL LEVEL: ———
  - 2) PRO. RAIL LEVEL: ———
  - 3) EXISTING GROUND LEVEL: ———
  - 4) DISMANTLED SHOWN AS: - - - - -
  - 5) LAND BOUNDARY INDICATED IN PLAN ARE THE PERPENDICULAR OFFSET FROM THE EXISTING MAIN LINE AND ARE ONLY INDICATIVE. FOR ACCURATE MEASUREMENT RESPECTIVE LAND PLAN TO BE VERIFIED.
  - 6) PINK BOOK ITEM NO.30 OF 2018/19.
  - 7) THE CHAINAGE AND EXISTING LEVELS GIVEN IN THE WORKING SECTION ARE ACTUALLY MEASURED AND VERIFIED AT SITE.
  - 8) THE CLASS OF ROUTE IS GROUP 'D', THE PROPOSED SPEED OF SECTION IS 100KM/PH. (SUBJECT TO SPEED RESTRICTIONS)
  - 9) TOP WIDTH OF FORMATION IS ENSURED AS 3.925M FROM THE CENTER LINE OF NEAREST TRACK.
  - 10) NECESSARY DRAINAGE ARRANGEMENTS TO SUIT SITE CONDITIONS WILL BE PROVIDED AS PER STANDARD BY ENGINEER-IN-CHARGE.
  - 11) MINIMUM 5.30 m TRACK CENTER SHOULD BE ENSURED (AFTER CURVES ALLOWANCES AND SLEW).
  - 12) VERTICAL CURVES & SPEED POTENTIAL DETAILS OF BVPL-HSRA SECTION ARE SUBMITTED IN E-Das AS ATTACHMENTS.
  - 13) ALL THE YARD PLANS (BYPL-HSRA SECTION) WILL BE SUBMITTED TO CPDE-SWR FOR APPROVAL.

L.C. NO.	CHAINAGE	MANNER/ UNMANNED	ENGINEERING/ TRAFFIC	CLASS OF L.C.	INTERLOCKED/ NON-INTERLOCKED	TVU	EXG.PRO. RL DIFFERENCE	REMARKS
104	160025		ENGINEERING	SPL CLASS	INTERLOCKED	20730 MAY.18	0.024	PRO. TO BE EXTENDED

HQ./SWR/UBL	<b>K RIDE</b>
DYCE/TRACK/HQ	AGM/CIVIL
CTE/SWR	AGM/CIVIL

**SOUTH WESTERN RAILWAY**

**K RIDE**

**RAIL INFRASTRUCTURE DEVELOPMENT COMPANY (KARNATAKA) LIMITED**

**BENGALURU DIVISION**

**SALEM - YESVANTPUR SECTION**

**PROPOSED DOUBLING OF TRACK BETWEEN BAIYAPPANAHALLI 'A' PANEL AND HOSUR STATIONS**

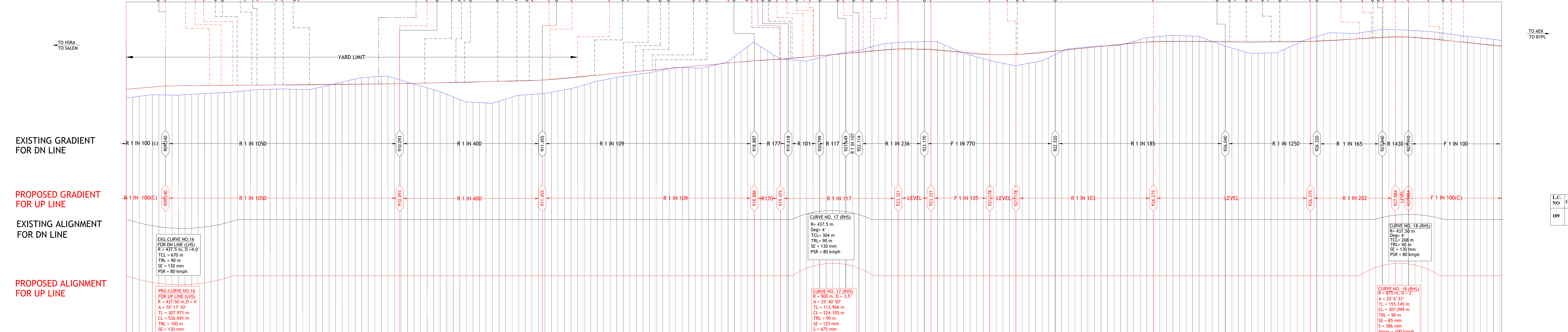
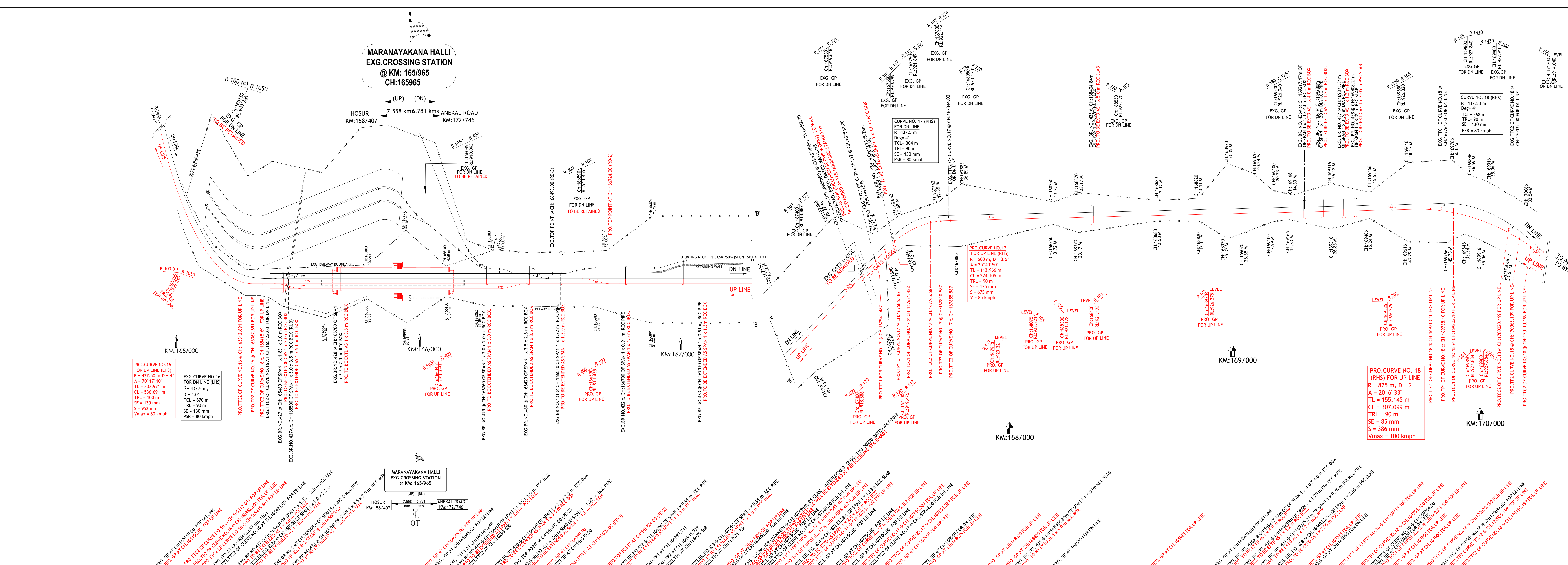
**WORKING PLAN & WORKING SECTION FROM CH:160000 TO 165250**

SCALE: HOR:1:5000 VER:1:500 SHEET NO : 02 OF 10

DRG.NO:KRIDE/DL/BH/018- 2020

TRACK CENTRE	DIFFERENCE OF RL (= PRO. - EXG.)	PRO. RAIL LEVEL FOR UP LINE	EXG. RAIL LEVEL FOR DN LINE	BANK / CUTTING	EXG. FORMATION LEVEL FOR DN LINE	PRO. FORMATION LEVEL FOR UP LINE	GROUND LEVEL	CHAINAGE
160000	0.026	887.844	887.818	1.426	887.131	887.106	885.480	160000
160005	0.004	887.844	887.840	0.936	887.082	887.082	886.500	160005
160010	0.004	887.844	887.840	0.936	887.082	887.082	886.500	160010
160015	0.006	887.844	887.838	1.544	887.102	887.102	886.200	160015
160020	0.006	887.844	887.838	2.254	887.122	887.122	886.000	160020
160025	0.008	887.844	887.836	2.964	887.142	887.142	885.800	160025
160030	0.008	887.844	887.834	3.674	887.162	887.162	885.600	160030
160035	0.008	887.844	887.832	4.384	887.182	887.182	885.400	160035
160040	0.008	887.844	887.830	5.094	887.202	887.202	885.200	160040
160045	0.008	887.844	887.828	5.804	887.222	887.222	885.000	160045
160050	0.008	887.844	887.826	6.514	887.242	887.242	884.800	160050
160055	0.008	887.844	887.824	7.224	887.262	887.262	884.600	160055
160060	0.008	887.844	887.822	7.934	887.282	887.282	884.400	160060
160065	0.008	887.844	887.820	8.644	887.302	887.302	884.200	160065
160070	0.008	887.844	887.818	9.354	887.322	887.322	884.000	160070
160075	0.008	887.844	887.816	10.064	887.342	887.342	883.800	160075
160080	0.008	887.844	887.814	10.774	887.362	887.362	883.600	160080
160085	0.008	887.844	887.812	11.484	887.382	887.382	883.400	160085
160090	0.008	887.844	887.810	12.194	887.402	887.402	883.200	160090
160095	0.008	887.844	887.808	12.904	887.422	887.422	883.000	160095
160100	0.008	887.844	887.806	13.614	887.442	887.442	882.800	160100
160105	0.008	887.844	887.804	14.324	887.462	887.462	882.600	160105
160110	0.008	887.844	887.802	15.034	887.482	887.482	882.400	160110
160115	0.008	887.844	887.800	15.744	887.502	887.502	882.200	160115
160120	0.008	887.844	887.798	16.454	887.522	887.522	882.000	160120
160125	0.008	887.844	887.796	17.164	887.542	887.542	881.800	160125
160130	0.008	887.844	887.794	17.874	887.562	887.562	881.600	160130
160135	0.008	887.844	887.792	18.584	887.582	887.582	881.400	160135
160140	0.008	887.844	887.790	19.294	887.602	887.602	881.200	160140
160145	0.008	887.844	887.788	20.004	887.622	887.622	881.000	160145
160150	0.008	887.844	887.786	20.714	887.642	887.642	880.800	160150
160155	0.008	887.844	887.784	21.424	887.662	887.662	880.600	160155
160160	0.008	887.844	887.782	22.134	887.682	887.682	880.400	160160
160165	0.008	887.844	887.780	22.844	887.702	887.702	880.200	160165
160170	0.008	887.844	887.778	23.554	887.722	887.722	880.000	160170
160175	0.008	887.844	887.776	24.264	887.742	887.742	879.800	160175
160180	0.008	887.844	887.774	24.974	887.762	887.762	879.600	160180
160185	0.008	887.844	887.772	25.684	887.782	887.782	879.400	160185
160190	0.008	887.844	887.770	26.394	887.802	887.802	879.200	160190
160195	0.008	887.844	887.768	27.104	887.822	887.822	879.000	160195
160200	0.008	887.844	887.766	27.814	887.842	887.842	878.800	160200
160205	0.008	887.844	887.764	28.524	887.862	887.862	878.600	160205
160210	0.008	887.844	887.762	29.234	887.882	887.882	878.400	160210
160215	0.008	887.844	887.760	29.944	887.902	887.902	878.200	160215
160220	0.008	887.844	887.758	30.654	887.922	887.922	878.000	160220
160225	0.008	887.844	887.756	31.364	887.942	887.942	877.800	160225
160230	0.008	887.844	887.754	32.074	887.962	887.962	877.600	160230
160235	0.008	887.844	887.752	32.784	887.982	887.982	877.400	160235
160240	0.008	887.844	887.750	33.494	888.002	888.002	877.200	160240
160245	0.008	887.844	887.748	34.204	888.022	888.022	877.000	160245
160250	0.008	887.844	887.746	34.914	888.042	888.042	876.800	160250
160255	0.008	887.844	887.744	35.624	888.062	888.062	876.600	160255
160260	0.008	887.844	887.742	36.334	888.082	888.082	876.400	160260
160265	0.008	887.844	887.740	37.044	888.102	888.102	876.200	160265
160270	0.008	887.844	887.738	37.754	888.122	888.122	876.000	160270
160275	0.008	887.844	887.736	38.464	888.142	888.142	875.800	160275
160280	0.008	887.844	887.734	39.174	888.162	888.162	875.600	160280
160285	0.008	887.844	887.732	39.884	888.182	888.182	875.400	160285
160290	0.008	887.844	887.730	40.594	888.202	888.202	875.200	160290
160295	0.008	887.844	887.728	41.304	888.222	888.222	875.000	160295
160300	0.008	887.844	887.726	42.014	888.242	888.242	874.800	160300
160305	0.008	887.844	887.724	42.724	888.262	888.262	874.600	160305
160310	0.008	887.844	887.722	43.434	888.282	888.282	874.400	160310
160315	0.008	887.844	887.720	44.144	888.302	888.302	874.200	160315
160320	0.008	887.844	887.718	44.854	888.322	888.322	874.000	160320
160325	0.008	887.844	887.716	45.564	888.342	888.342	873.800	160325
160330	0.008	887.844	887.714	46.274	888.362	888.362	873.600	160330
160335	0.008	887.844	887.712	46.984	888.382	888.382	873.400	160335
160340	0.008	887.844	887.710	47.694	888.402	888.402	873.200	160340
160345	0.008	887.844	887.708	48.404	888.422	888.422	873.000	160345
160350	0.008	887.844	887.706	49.114	888.442	888.442	872.800	160350
160355	0.008	887.844	887.704	49.824	888.462	888.462	872.600	160355
160360	0.008	887.844	887.702	50.534	888.482	888.482	872.400	160360
160365	0.008	887.844	887.700	51.244	888.502	888.502	872.200	160365
160370	0.008	887.844	887.698	51.954	888.522	888.522	872.000	160370
160375	0.008	887.844	887.696	52.664	888.542	888.542	871.800	160375
160380	0.008	887.844	887.694	53.374	888.562	888.562	871.600	160380
160385	0.008	887.844	887.692	54.084	888.582	888.582	871.400	160385
160390	0.008	887.844	887.690	54.794	888.602	888.602	871.200	160390
160395	0.008	887.844	887.688	55.504	888.622	888.622	871.000	160395
160400	0.008	887.844	887.686	56.214	888.642	888.642	870.800	160400
160405	0.008	887.844	887.684	56.924	888.662	888.662	870.600	160405
160410	0.008	887.844	887.682	57.634	888.682	888.682	870.400	160410
160415	0.008	887.844	887.680	58.344	888.702	888.702	870.200	160415
160420	0.008	887.844	887.678	59.054	888.722	888.722	870.000	160420
160425	0.008	887.844	887.676	59.764	888.742	888.742	869.800	160425
160430	0.008	887.844	887.674	60.474	888.762	888.762	869.600	160430
160435	0.008	887.844	887.672	61.184	888.782	888.782	869.400	160435
160440	0.008	887.844	887.670	61.894	888.802	888.802	869.200	160440
160445	0.008	887.844	887.668	62.604	888.822	888.822	869.000	160445
160450	0.008	887.844	887.666	63.314	888.842	888.842	868.800	160450
160455	0.008							





- NOTE:**
- EXISTING RAIL LEVEL: ———
  - PRO. RAIL LEVEL: - - - - -
  - EXISTING GROUND LEVEL: ———
  - DISMANTLED SHOWN AS: - - - - -
  - LAND BOUNDARY DISTANCE IN PLAN ARE THE PERPENDICULAR OFFSET FROM THE EXISTING MAIN LINE AND ARE ONLY INDICATIVE. FOR ACCURATE MEASUREMENT RESPECTIVE LAND PLAN TO BE VERIFIED.
  - PINK BOOK ITEM NO.30 OF 2018/19.
  - THE CHAINAGE AND EXISTING LEVELS GIVEN IN THE WORKING SECTION ARE ACTUALLY MEASURED AND VERIFIED AT SITE.
  - THE CLASS OF ROUTE IS GROUP 'D', THE PROPOSED SPEED OF SECTION IS 100KMPH. (SUBJECT TO SPEED RESTRICTIONS).
  - TOP WIDTH OF FORMATION IS ENSURED AS 3.925M FROM THE CENTER LINE OF NEAREST TRACK.
  - NECESSARY DRAINAGE ARRANGEMENTS TO SUIT SITE CONDITIONS WILL BE PROVIDED AS PER STANDARD BY ENGINEER-IN-CHARGE.
  - MINIMUM 5.30M TRACK CENTER SHOULD BE ENSURED (AFTER CURVES ALLOWANCES AND SLEW).
  - VERTICAL CURVES & SPEED POTENTIAL DETAILS OF BYPL-HSRA SECTION ARE SUBMITTED IN E-Das as ATTACHMENTS.
  - ALL THE YARD PLANS (PFL-HSRA SECTION) WILL BE SUBMITTED TO CPDE-SWR FOR APPROVAL.

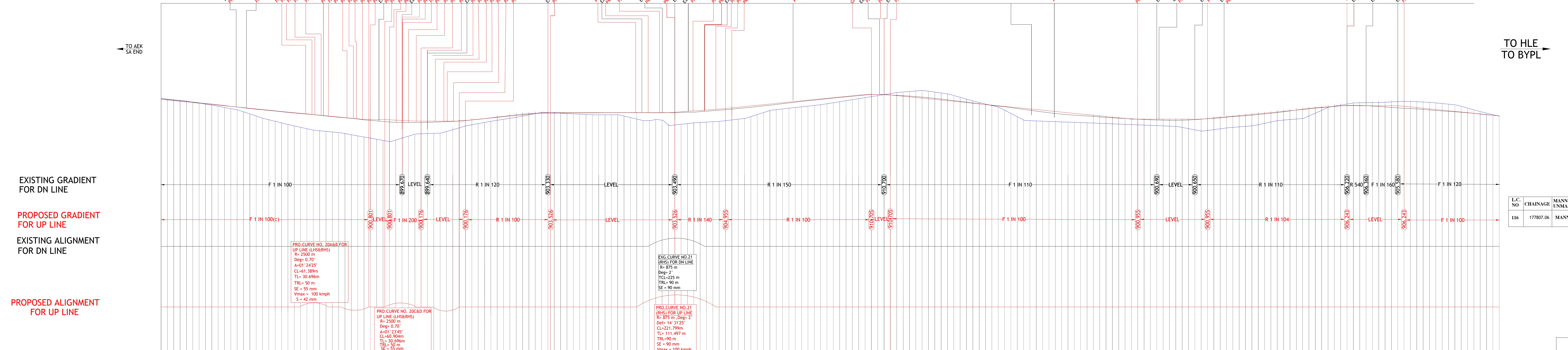
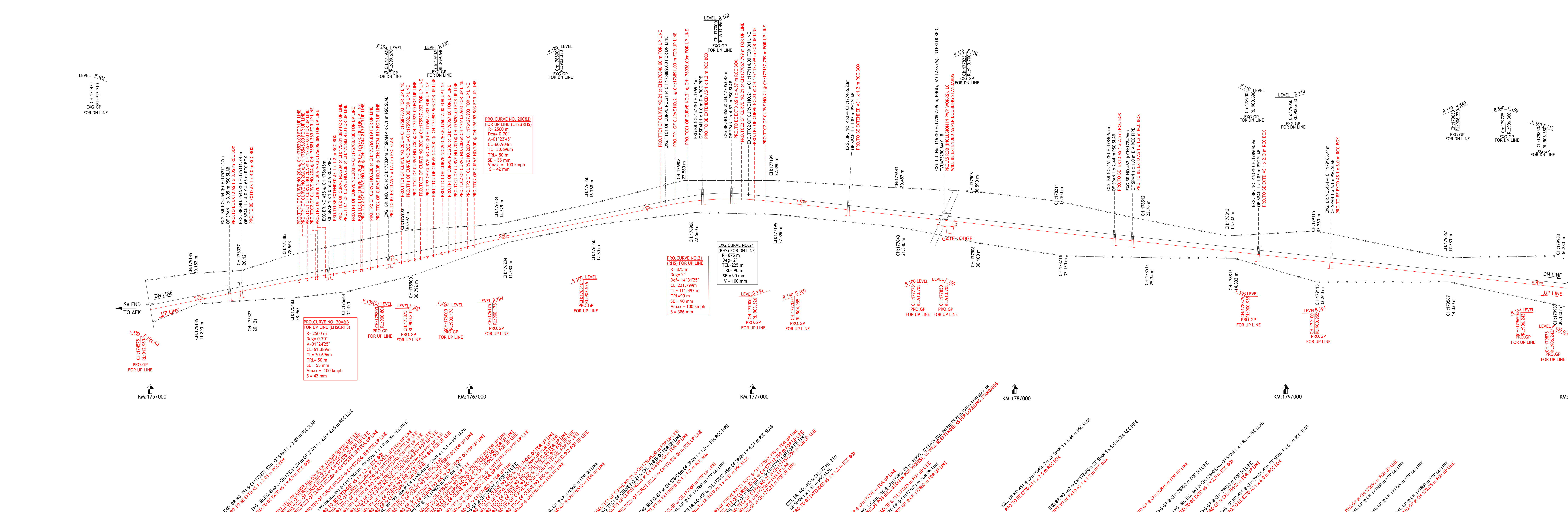
L.C. NO	CHAINAGE	CLASS	MANNED UNMANNED	ENGINEERING TRAFFIC	INTERLOCKED/ NON-INTERLOCKED	TVU	EXG. PRO. RL DIFFERENCE	REMARKS
169	16796	B1	MANNED	ENGINEERING	INTERLOCKED	90770	0.061	PROAS FOR EXCLUSION IN PWP WORKS

CH	TRACK CENTRE	DIFFERENCE OF RL (= PRL - ERL)	PRO. RAIL LEVEL FOR UP LINE	EXG. RAIL LEVEL FOR DN LINE	BANK / CUTTING (= PFL - GL)	EXG. FORMATION LEVEL FOR DN LINE	PRO. FORMATION LEVEL FOR UP LINE	GROUND LEVEL	CHAINAGE
165000	5.964	0.015	907.985	908.075	2.627	907.232	907.247	904.403	165000
165005	6.118	0.020	908.094	908.174	2.508	907.438	907.456	904.448	165005
165010	6.272	0.025	908.203	908.273	2.368	907.643	907.663	904.493	165010
165015	6.426	0.030	908.312	908.372	2.154	907.848	907.870	904.538	165015
165020	6.580	0.035	908.421	908.471	2.014	908.053	908.076	904.583	165020
165025	6.734	0.040	908.530	908.570	1.854	908.258	908.282	904.628	165025
165030	6.888	0.045	908.639	908.669	1.714	908.463	908.488	904.673	165030
165035	7.042	0.050	908.748	908.768	1.594	908.668	908.694	904.718	165035
165040	7.196	0.055	908.857	908.867	1.494	908.873	908.899	904.763	165040
165045	7.350	0.060	908.966	908.956	1.414	909.078	909.104	904.808	165045
165050	7.504	0.065	909.075	908.995	1.354	909.283	909.309	904.853	165050
165055	7.658	0.070	909.184	908.994	1.314	909.488	909.514	904.898	165055
165060	7.812	0.075	909.293	908.963	1.284	909.693	909.719	904.943	165060
165065	7.966	0.080	909.402	908.892	1.264	909.898	909.924	904.988	165065
165070	8.120	0.085	909.511	908.781	1.254	910.103	910.129	905.033	165070
165075	8.274	0.090	909.620	908.630	1.254	910.308	910.334	905.078	165075
165080	8.428	0.095	909.729	908.439	1.264	910.513	910.539	905.123	165080
165085	8.582	0.100	909.838	908.208	1.284	910.718	910.744	905.168	165085
165090	8.736	0.105	909.947	907.937	1.314	910.923	910.949	905.213	165090
165095	8.890	0.110	910.056	907.626	1.354	911.128	911.154	905.258	165095
165100	9.044	0.115	910.165	907.275	1.404	911.333	911.359	905.303	165100
165105	9.198	0.120	910.274	906.884	1.454	911.538	911.564	905.348	165105
165110	9.352	0.125	910.383	906.453	1.504	911.743	911.769	905.393	165110
165115	9.506	0.130	910.492	905.982	1.554	911.948	911.974	905.438	165115
165120	9.660	0.135	910.601	905.471	1.604	912.153	912.179	905.483	165120
165125	9.814	0.140	910.710	904.920	1.654	912.358	912.384	905.528	165125
165130	9.968	0.145	910.819	904.329	1.704	912.563	912.589	905.573	165130
165135	10.122	0.150	910.928	903.708	1.754	912.768	912.794	905.618	165135
165140	10.276	0.155	911.037	903.057	1.804	912.973	912.999	905.663	165140
165145	10.430	0.160	911.146	902.376	1.854	913.178	913.204	905.708	165145
165150	10.584	0.165	911.255	901.665	1.904	913.383	913.409	905.753	165150
165155	10.738	0.170	911.364	900.924	1.954	913.588	913.614	905.798	165155
165160	10.892	0.175	911.473	900.153	2.004	913.793	913.819	905.843	165160
165165	11.046	0.180	911.582	900.352	2.054	913.998	914.024	905.888	165165
165170	11.200	0.185	911.691	900.521	2.104	914.203	914.229	905.933	165170
165175	11.354	0.190	911.800	900.660	2.154	914.408	914.434	905.978	165175
165180	11.508	0.195	911.909	900.769	2.204	914.613	914.639	906.023	165180
165185	11.662	0.200	912.018	900.848	2.254	914.818	914.844	906.068	165185
165190	11.816	0.205	912.127	900.897	2.304	915.023	915.049	906.113	165190
165195	11.970	0.210	912.236	900.916	2.354	915.228	915.254	906.158	165195
165200	12.124	0.215	912.345	900.905	2.404	915.433	915.459	906.203	165200
165205	12.278	0.220	912.454	900.864	2.454	915.638	915.664	906.248	165205
165210	12.432	0.225	912.563	900.793	2.504	915.843	915.869	906.293	165210
165215	12.586	0.230	912.672	900.692	2.554	916.048	916.074	906.338	165215
165220	12.740	0.235	912.781	900.561	2.604	916.253	916.279	906.383	165220
165225	12.894	0.240	912.890	900.400	2.654	916.458	916.484	906.428	165225
165230	13.048	0.245	913.000	900.209	2.704	916.663	916.689	906.473	165230
165235	13.202	0.250	913.109	900.008	2.754	916.868	916.894	906.518	165235
165240	13.356	0.255	913.218	899.787	2.804	917.073	917.099	906.563	165240
165245	13.510	0.260	913.327	899.536	2.854	917.278	917.304	906.608	165245
165250	13.664	0.265	913.436	899.255	2.904	917.483	917.509	906.653	165250
165255	13.818	0.270	913.545	898.944	2.954	917.688	917.714	906.698	165255
165260	13.972	0.275	913.654	898.603	3.004	917.893	917.919	906.743	165260
165265	14.126	0.280	913.763	898.232	3.054	918.098	918.124	906.788	165265
165270	14.280	0.285	913.872	897.831	3.104	918.303	918.329	906.833	165270
165275	14.434	0.290	913.981	897.400	3.154	918.508	918.534	906.878	165275
165280	14.588	0.295	914.090	896.939	3.204	918.713	918.739	906.923	165280
165285	14.742	0.300	914.200	896.448	3.254	918.918	918.944	906.968	165285
165290	14.896	0.305	914.309	895.927	3.304	919.123	919.149	907.013	165290
165295	15.050	0.310	914.418	895.376	3.354	919.328	919.354	907.058	165295
165300	15.204	0.315	914.527	894.795	3.404	919.533	919.559	907.103	165300
165305	15.358	0.320	914.636	894.184	3.454	919.738	919.764	907.148	165305
165310	15.512	0.325	914.745	893.543	3.504	919.943	919.969	907.193	165310
165315	15.666	0.330	914.854	892.872	3.554	920.148	920.174	907.238	165315
165320	15.820	0.335	914.963	892.171	3.604	920.353	920.379	907.283	165320
165325	15.974	0.340	915.072	891.440	3.654	920.558	920.584	907.328	165325
165330	16.128	0.345	915.181	890.679	3.704	920.763	920.789	907.373	165330
165335	16.282	0.350	915.290	889.888	3.754	920.968	920.994	907.418	165335
165340	16.436	0.355	915.400	889.067	3.804	921.173	921.199	907.463	165340
165345	16.590	0.360	915.509	888.216	3.854	921.378	921.404	907.508	165345
165350	16.744	0.365	915.618	887.335	3.904	921.583	921.609	907.553	165350
165355	16.898	0.370	915.727	886.424	3.954	921.788	921.814	907.598	165355
165360	17.052	0.375	915.836	885.483	4.004	921.993	922.019	907.643	165360
165365	17.206	0.380	915.945	884.512	4.054	922.198	922.224	907.688	165365
165370	17.360	0.385	916.054	883.511	4.104	922.403	922.429	907.733	165370
165375	17.514	0.390	916.163	882.480	4.154	922.608	922.634	907.778	165375
165380	17.668	0.395	916.272	881.419	4.204	922.813	922.839	907.823	165380
165385	17.822	0.400	916.381	880.328	4.254	923.018	923.044	907.868	165385
165390	17.976	0.405	916.490	879.207	4.304	923.223	923.249	907.913	165390
165395	18.130	0.410	916.600	878.056	4.354	923.428	923.454	907.958	165395
165400	18.284	0.415	916.709	876.875	4.404	923.633	923.659	908.003	165400
165405	18.438	0.420	916.818	875.664	4.454	923.838	923.864	908.048	165405
165410	18.592	0.425	916.927	874.423	4.504	924.043	924.069	908.093	165410
165415	18.746	0.430	917.036	873.152	4.554	924.248	924.274	908.138	165415
165420	18.900	0.435	917.145	871.851	4.604	924.453	924.479	908.183	165420
165425	19.054	0.440	917.254	870.520	4.654	924.658	924.684	908.228	165425
165430	19.208	0.445	917.363	869.159	4.704	924.863	924.889	908.273	165430
165435	19.362	0.450	917.472	867.768	4.754	925.068	925.094	908.318	165435
165440	19.516	0.455	917.581	866.347	4.804	925.273	925.299	908.363	165440
165445	19.670	0.460	917.690	864.896	4.854	925.478	925.504	908.408	165445
165450	19.824	0.465	917.800	863.415	4.904	925.683	925.709	908.453	165450
165455	19.978	0.470	917.909	861.904	4.954	925.888	925.914	908.498	165455
165460	20.132	0.475	918.018	860.363	5.004	9			









- NOTE:
- EXISTING RAIL LEVEL: ———
  - PRO. RAIL LEVEL: ———
  - EXISTING GROUND LEVEL: ———
  - DISMANTLED SHOWN AS: - - - - -
  - LAND BOUNDARY DISTANCE IN PLAN ARE THE PERPENDICULAR OFFSET FROM THE EXISTING MAIN LINE AND ARE ONLY INDICATIVE. FOR ACCURATE MEASUREMENT RESPECTIVE LAND PLAN TO BE VERIFIED.
  - PINK BOOK ITEM NO.30 OF 2018/19.
  - THE CHANGE AND EXISTING LEVELS GIVEN IN THE WORKING SECTION ARE ACTUALLY MEASURED AND VERIFIED AT SITE.
  - THE CLASS OF ROUTE IS GROUP 'D', THE PROPOSED SPEED OF SECTION IS 100KM/H. (SUBJECT TO SPEED RESTRICTIONS)
  - TOP WIDTH OF FORMATION IS ENSURED AS 3.925M FROM THE CENTER LINE OF NEAREST TRACK.
  - NECESSARY DRAINAGE ARRANGEMENTS TO SUIT SITE CONDITIONS WILL BE PROVIDED AS PER STANDARD BY ENGINEER- IN- CHARGE.
  - MINIMUM 5.30M TRACK CENTER SHOULD BE ENSURED (AFTER CURVES ALLOWANCES AND SLEW).
  - VERTICAL CURVES & SPEED POTENTIAL DETAILS OF BYPH-HSRA SECTION ARE SUBMITTED IN E-Das AS ATTACHMENTS.
  - ALL THE YARD PLANS (BYPL-HSRA SECTION) WILL BE SUBMITTED TO CPDE-SWR FOR APPROVAL.

L.C. NO	CHAINSAG	MANNED UNMANNED	ENGINEERING/ TRAFFIC	CLASS OF LC	INTERLOCKED NON-INTERLOCKED	TVU	EXG-PRO. RL	REMARKS
116	177807.06	MANNED	ENGINEERING	'A' CLASS	INTERLOCKED	73200	0.848	PRO. AS FOR INCLUSION IN PWP WORKS

EXISTING GRADIENT FOR DN LINE

PROPOSED GRADIENT FOR UP LINE

EXISTING ALIGNMENT FOR DN LINE

PROPOSED ALIGNMENT FOR UP LINE

CHAINAGE	TRACK CENTRE	DIFFERENCE OF RL (= PRL - ERL)	PRO. RAIL LEVEL FOR UP LINE	EXG. RAIL LEVEL FOR DN LINE	BANK / CUTTING (= PFL - GL)	EXG. FORMATION LEVEL FOR DN LINE	PRO. FORMATION LEVEL FOR UP LINE	GROUND LEVEL
17500	900.000	0.000	900.000	900.000	0.000	900.000	900.000	900.000
17505	900.005	0.005	900.005	900.005	0.000	900.005	900.005	900.005
17510	900.010	0.010	900.010	900.010	0.000	900.010	900.010	900.010
17515	900.015	0.015	900.015	900.015	0.000	900.015	900.015	900.015
17520	900.020	0.020	900.020	900.020	0.000	900.020	900.020	900.020
17525	900.025	0.025	900.025	900.025	0.000	900.025	900.025	900.025
17530	900.030	0.030	900.030	900.030	0.000	900.030	900.030	900.030
17535	900.035	0.035	900.035	900.035	0.000	900.035	900.035	900.035
17540	900.040	0.040	900.040	900.040	0.000	900.040	900.040	900.040
17545	900.045	0.045	900.045	900.045	0.000	900.045	900.045	900.045
17550	900.050	0.050	900.050	900.050	0.000	900.050	900.050	900.050
17555	900.055	0.055	900.055	900.055	0.000	900.055	900.055	900.055
17560	900.060	0.060	900.060	900.060	0.000	900.060	900.060	900.060
17565	900.065	0.065	900.065	900.065	0.000	900.065	900.065	900.065
17570	900.070	0.070	900.070	900.070	0.000	900.070	900.070	900.070
17575	900.075	0.075	900.075	900.075	0.000	900.075	900.075	900.075
17580	900.080	0.080	900.080	900.080	0.000	900.080	900.080	900.080
17585	900.085	0.085	900.085	900.085	0.000	900.085	900.085	900.085
17590	900.090	0.090	900.090	900.090	0.000	900.090	900.090	900.090
17595	900.095	0.095	900.095	900.095	0.000	900.095	900.095	900.095
17600	900.100	0.100	900.100	900.100	0.000	900.100	900.100	900.100
17605	900.105	0.105	900.105	900.105	0.000	900.105	900.105	900.105
17610	900.110	0.110	900.110	900.110	0.000	900.110	900.110	900.110
17615	900.115	0.115	900.115	900.115	0.000	900.115	900.115	900.115
17620	900.120	0.120	900.120	900.120	0.000	900.120	900.120	900.120
17625	900.125	0.125	900.125	900.125	0.000	900.125	900.125	900.125
17630	900.130	0.130	900.130	900.130	0.000	900.130	900.130	900.130
17635	900.135	0.135	900.135	900.135	0.000	900.135	900.135	900.135
17640	900.140	0.140	900.140	900.140	0.000	900.140	900.140	900.140
17645	900.145	0.145	900.145	900.145	0.000	900.145	900.145	900.145
17650	900.150	0.150	900.150	900.150	0.000	900.150	900.150	900.150
17655	900.155	0.155	900.155	900.155	0.000	900.155	900.155	900.155
17660	900.160	0.160	900.160	900.160	0.000	900.160	900.160	900.160
17665	900.165	0.165	900.165	900.165	0.000	900.165	900.165	900.165
17670	900.170	0.170	900.170	900.170	0.000	900.170	900.170	900.170
17675	900.175	0.175	900.175	900.175	0.000	900.175	900.175	900.175
17680	900.180	0.180	900.180	900.180	0.000	900.180	900.180	900.180
17685	900.185	0.185	900.185	900.185	0.000	900.185	900.185	900.185
17690	900.190	0.190	900.190	900.190	0.000	900.190	900.190	900.190
17695	900.195	0.195	900.195	900.195	0.000	900.195	900.195	900.195
17700	900.200	0.200	900.200	900.200	0.000	900.200	900.200	900.200
17705	900.205	0.205	900.205	900.205	0.000	900.205	900.205	900.205
17710	900.210	0.210	900.210	900.210	0.000	900.210	900.210	900.210
17715	900.215	0.215	900.215	900.215	0.000	900.215	900.215	900.215
17720	900.220	0.220	900.220	900.220	0.000	900.220	900.220	900.220
17725	900.225	0.225	900.225	900.225	0.000	900.225	900.225	900.225
17730	900.230	0.230	900.230	900.230	0.000	900.230	900.230	900.230
17735	900.235	0.235	900.235	900.235	0.000	900.235	900.235	900.235
17740	900.240	0.240	900.240	900.240	0.000	900.240	900.240	900.240
17745	900.245	0.245	900.245	900.245	0.000	900.245	900.245	900.245
17750	900.250	0.250	900.250	900.250	0.000	900.250	900.250	900.250
17755	900.255	0.255	900.255	900.255	0.000	900.255	900.255	900.255
17760	900.260	0.260	900.260	900.260	0.000	900.260	900.260	900.260
17765	900.265	0.265	900.265	900.265	0.000	900.265	900.265	900.265
17770	900.270	0.270	900.270	900.270	0.000	900.270	900.270	900.270
17775	900.275	0.275	900.275	900.275	0.000	900.275	900.275	900.275
17780	900.280	0.280	900.280	900.280	0.000	900.280	900.280	900.280
17785	900.285	0.285	900.285	900.285	0.000	900.285	900.285	900.285
17790	900.290	0.290	900.290	900.290	0.000	900.290	900.290	900.290
17795	900.295	0.295	900.295	900.295	0.000	900.295	900.295	900.295
17800	900.300	0.300	900.300	900.300	0.000	900.300	900.300	900.300
17805	900.305	0.305	900.305	900.305	0.000	900.305	900.305	900.305
17810	900.310	0.310	900.310	900.310	0.000	900.310	900.310	900.310
17815	900.315	0.315	900.315	900.315	0.000	900.315	900.315	900.315
17820	900.320	0.320	900.320	900.320	0.000	900.320	900.320	900.320
17825	900.325	0.325	900.325	900.325	0.000	900.325	900.325	900.325
17830	900.330	0.330	900.330	900.330	0.000	900.330	900.330	900.330
17835	900.335	0.335	900.335	900.335	0.000	900.335	900.335	900.335
17840	900.340	0.340	900.340	900.340	0.000	900.340	900.340	900.340
17845	900.345	0.345	900.345	900.345	0.000	900.345	900.345	900.345
17850	900.350	0.350	900.350	900.350	0.000	900.350	900.350	900.350
17855	900.355	0.355	900.355	900.355	0.000	900.355	900.355	900.355
17860	900.360	0.360	900.360	900.360	0.000	900.360	900.360	900.360
17865	900.365	0.365	900.365	900.365	0.000	900.365	900.365	900.365
17870	900.370	0.370	900.370	900.370	0.000	900.370	900.370	900.370
17875	900.375	0.375	900.375	900.375	0.000	900.375	900.375	900.375
17880	900.380	0.380	900.380	900.380	0.000	900.380	900.380	900.380
17885	900.385	0.385	900.385	900.385	0.000	900.385	900.385	900.385
17890	900.390	0.390	900.390	900.390	0.000	900.390	900.390	900.390
17895	900.395	0.395	900.395	900.395	0.000	900.395	900.395	900.395
17900	900.400	0.400	900.400	900.400	0.000	900.400	900.400	900.400
17905	900.405	0.405	900.405	900.405	0.000	900.405	900.405	900.405
17910	900.410	0.410	900.410	900.410	0.000	900.410	900.410	900.410
17915	900.415	0.415	900.415	900.415	0.000	900.415	900.415	900.415
17920	900.420	0.420	900.420	900.420	0.000	900.420	900.420	900.420
17925	900.425	0.425	900.425	900.425	0.000	900.425	900.425	900.425
17930	900.430	0.430	900.430	900.430	0.000	900.430	900.430	900.430
17935	900.435	0.435	900.435	900.435	0.000	900.435	900.435	900.435
17940	900.440	0.440	900.440	900.440	0.000	900.440	900.440	900.440
17945	900.445	0.445	900.445	900.445	0.000	900.445	900.445	900.445
17950	900.450	0.450	900.450	900.450	0.000	900.450	900.450	900.450
17955	900.455	0.455	900.455	900.455	0.000	900.455	900.455	900.455
17960	900.460	0.460	900.460	900.460	0.000	900.460	900.460	900.460
17965	900.465	0.465	900.465	900.465	0.000	900.465	900.465	900.465
17970	900.470	0.470	900.470	900.470	0.000	900.470	900.470	900.470
17975	900.475	0.475	900.475	900.475	0.000	900.475	900.475	900.475
17980	900.480	0.480	900.480	900.480	0.000	900.480	900.480	900.480
17985	900.485	0.485	900.485	900.485	0.000	900.485	900.485	900.485
17990	900.490	0.490	900.490	900.490	0.000	900.490	900.490	900.490
17995	900.495	0.495	900.495	900.495	0.000	900.495	900.495	900.495
18000	900.500	0.500	900.500	900.500	0.000	900.500	900.500	900.500

HQ/SWR/UBL	K RIDE
DYCE/TRACK/HQ	AGM/CIVIL
CTE /SWR	AGM/CIVIL

**SOUTH WESTERN RAILWAY**

**K RIDE RAIL INFRASTRUCTURE DEVELOPMENT COMPANY (KARNATAKA) LIMITED**

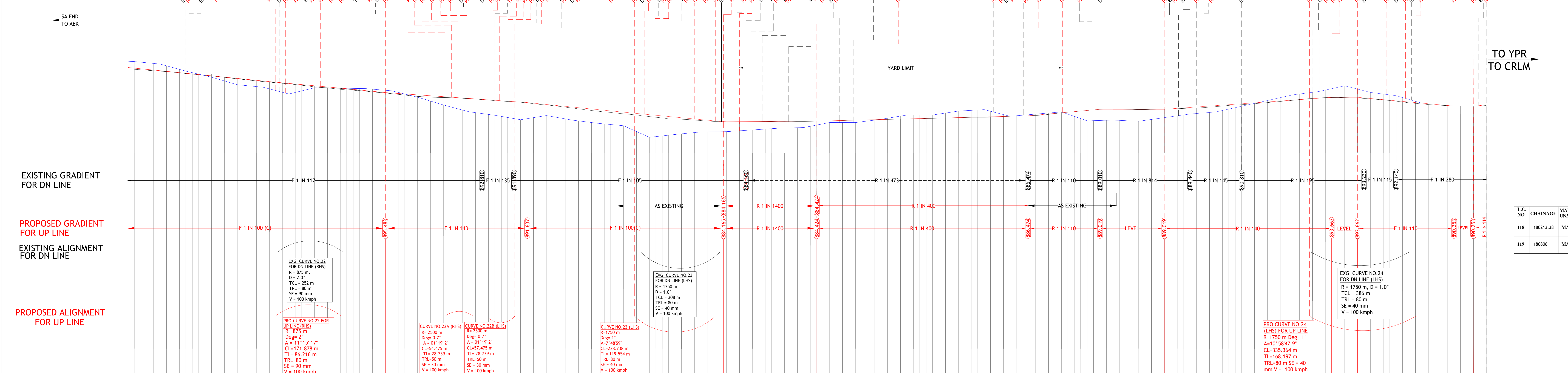
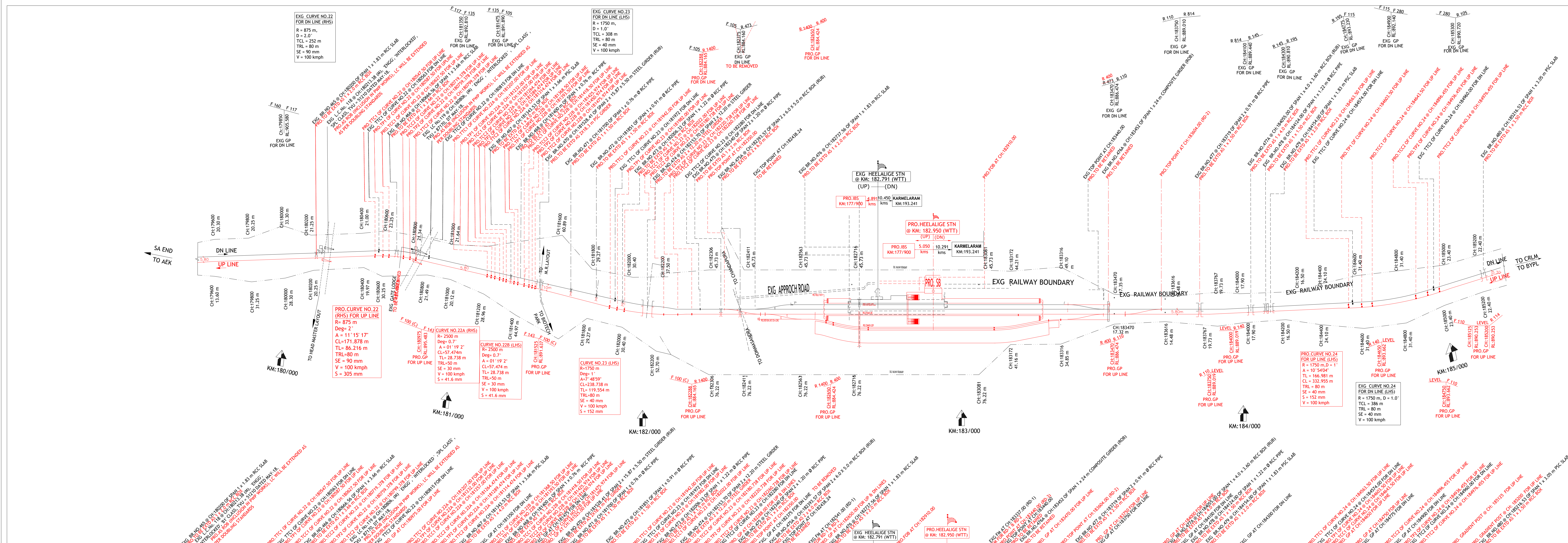
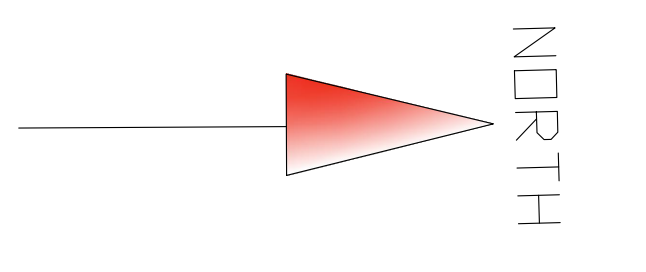
**BENGALURU DIVISION**

**SALEM - YESVANTPUR SECTION**

PROPOSED DOUBLING OF TRACK BETWEEN  
**BAIYAPPANAHALLI 'A' PANEL AND HOSUR STATIONS**  
 WORKING PLAN & WORKING SECTION  
 FROM CH:175000 TO 180250

SCALE	HOR:1:5000 VER:1:500	SHEET NO : 05 OF 10
DRG.NO:		

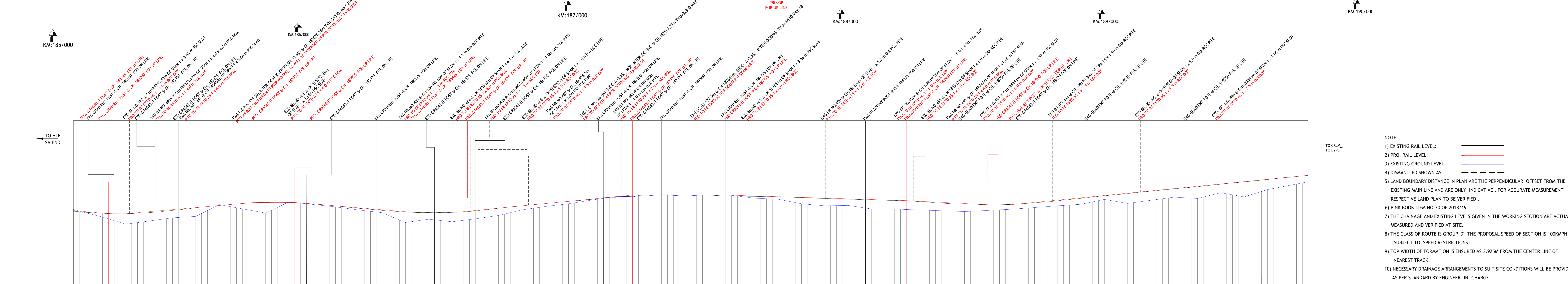
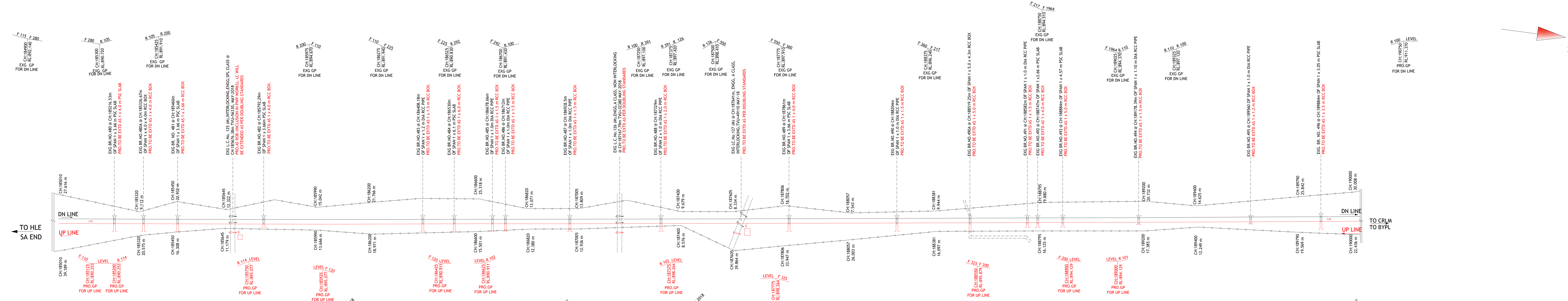




- NOTE:
- EXISTING RAIL LEVEL
  - PRO. RAIL LEVEL
  - EXISTING GROUND LEVEL
  - DISMANTLED SHOWN AS
  - LAND BOUNDARY DISTANCE IN PLAN ARE THE PERPENDICULAR OFFSET FROM THE EXISTING MAIN LINE AND ARE ONLY INDICATIVE. FOR ACCURATE MEASUREMENT RESPECTIVE LAND PLAN TO BE VERIFIED.
  - PINK BOOK ITEM NO.30 OF 2018/19.
  - THE CHANGE AND EXISTING LEVELS GIVEN IN THE WORKING SECTION ARE ACTUALLY MEASURED AND VERIFIED AT SITE.
  - THE CLASS OF ROUTE IS GROUP 'D', THE PROPOSED SPEED OF SECTION IS 100KM/H. (SUBJECT TO SPEED RESTRICTIONS)
  - TOP WIDTH OF FORMATION IS ENSURED AS 3.925M FROM THE CENTER LINE OF NEAREST TRACK.
  - NECESSARY DRAINAGE ARRANGEMENTS TO SUIT SITE CONDITIONS WILL BE PROVIDED AS PER STANDARD BY ENGINEER-IN-CHARGE.
  - MINIMUM 5.30M TRACK CENTER SHOULD BE ENSURED (AFTER CURVES ALLOWANCES AND SLEW).
  - EXG. CRS SANCTION No:SR/060/2018-19 dt:17.10.18
  - VERTICAL CURVES & SPEED POTENTIAL DETAILS OF BPLR-HSRA SECTION ARE SUBMITTED IN E-Dat as ATTACHMENTS.
  - ALL THE YARD PLANS (BYPL-HSRA SECTION) WILL BE SUBMITTED TO CPDE-SWR FOR APPROVAL.

CHAINAGE	TRACK CENTRE	DIFFERENCE OF RL (= PRL - ERL)	PRO. RAIL LEVEL FOR UP LINE	EXG. RAIL LEVEL FOR DN LINE	BANK / CUTTING (= PFL - GL)	EXG. FORMATION LEVEL FOR DN LINE	PRO. FORMATION LEVEL FOR UP LINE	GROUND LEVEL
180000	907.370	-3.125	904.125	904.370	-3.125	903.842	904.125	907.370
180005	907.328	-3.122	904.123	904.328	-3.122	903.842	904.123	907.328
180010	907.286	-3.119	904.120	904.286	-3.119	903.842	904.120	907.286
180015	907.244	-3.116	904.117	904.244	-3.116	903.842	904.117	907.244
180020	907.202	-3.113	904.114	904.202	-3.113	903.842	904.114	907.202
180025	907.160	-3.110	904.111	904.160	-3.110	903.842	904.111	907.160
180030	907.118	-3.107	904.108	904.118	-3.107	903.842	904.108	907.118
180035	907.076	-3.104	904.105	904.076	-3.104	903.842	904.105	907.076
180040	907.034	-3.101	904.102	904.034	-3.101	903.842	904.102	907.034
180045	906.992	-3.098	904.099	903.992	-3.098	903.842	904.099	906.992
180050	906.950	-3.095	904.096	903.950	-3.095	903.842	904.096	906.950
180055	906.908	-3.092	904.093	903.908	-3.092	903.842	904.093	906.908
180060	906.866	-3.089	904.090	903.866	-3.089	903.842	904.090	906.866
180065	906.824	-3.086	904.087	903.824	-3.086	903.842	904.087	906.824
180070	906.782	-3.083	904.084	903.782	-3.083	903.842	904.084	906.782
180075	906.740	-3.080	904.081	903.740	-3.080	903.842	904.081	906.740
180080	906.698	-3.077	904.078	903.698	-3.077	903.842	904.078	906.698
180085	906.656	-3.074	904.075	903.656	-3.074	903.842	904.075	906.656
180090	906.614	-3.071	904.072	903.614	-3.071	903.842	904.072	906.614
180095	906.572	-3.068	904.069	903.572	-3.068	903.842	904.069	906.572
180100	906.530	-3.065	904.066	903.530	-3.065	903.842	904.066	906.530
180105	906.488	-3.062	904.063	903.488	-3.062	903.842	904.063	906.488
180110	906.446	-3.059	904.060	903.446	-3.059	903.842	904.060	906.446
180115	906.404	-3.056	904.057	903.404	-3.056	903.842	904.057	906.404
180120	906.362	-3.053	904.054	903.362	-3.053	903.842	904.054	906.362
180125	906.320	-3.050	904.051	903.320	-3.050	903.842	904.051	906.320
180130	906.278	-3.047	904.048	903.278	-3.047	903.842	904.048	906.278
180135	906.236	-3.044	904.045	903.236	-3.044	903.842	904.045	906.236
180140	906.194	-3.041	904.042	903.194	-3.041	903.842	904.042	906.194
180145	906.152	-3.038	904.039	903.152	-3.038	903.842	904.039	906.152
180150	906.110	-3.035	904.036	903.110	-3.035	903.842	904.036	906.110
180155	906.068	-3.032	904.033	903.068	-3.032	903.842	904.033	906.068
180160	906.026	-3.029	904.030	903.026	-3.029	903.842	904.030	906.026
180165	905.984	-3.026	904.027	902.984	-3.026	903.842	904.027	905.984
180170	905.942	-3.023	904.024	902.942	-3.023	903.842	904.024	905.942
180175	905.900	-3.020	904.021	902.900	-3.020	903.842	904.021	905.900
180180	905.858	-3.017	904.018	902.858	-3.017	903.842	904.018	905.858
180185	905.816	-3.014	904.015	902.816	-3.014	903.842	904.015	905.816
180190	905.774	-3.011	904.012	902.774	-3.011	903.842	904.012	905.774
180195	905.732	-3.008	904.009	902.732	-3.008	903.842	904.009	905.732
180200	905.690	-3.005	904.006	902.690	-3.005	903.842	904.006	905.690
180205	905.648	-3.002	904.003	902.648	-3.002	903.842	904.003	905.648
180210	905.606	-2.999	904.000	902.606	-2.999	903.842	904.000	905.606
180215	905.564	-2.996	903.997	902.564	-2.996	903.842	903.997	905.564
180220	905.522	-2.993	903.994	902.522	-2.993	903.842	903.994	905.522
180225	905.480	-2.990	903.991	902.480	-2.990	903.842	903.991	905.480
180230	905.438	-2.987	903.988	902.438	-2.987	903.842	903.988	905.438
180235	905.396	-2.984	903.985	902.396	-2.984	903.842	903.985	905.396
180240	905.354	-2.981	903.982	902.354	-2.981	903.842	903.982	905.354
180245	905.312	-2.978	903.979	902.312	-2.978	903.842	903.979	905.312
180250	905.270	-2.975	903.976	902.270	-2.975	903.842	903.976	905.270
180255	905.228	-2.972	903.973	902.228	-2.972	903.842	903.973	905.228
180260	905.186	-2.969	903.970	902.186	-2.969	903.842	903.970	905.186
180265	905.144	-2.966	903.967	902.144	-2.966	903.842	903.967	905.144
180270	905.102	-2.963	903.964	902.102	-2.963	903.842	903.964	905.102
180275	905.060	-2.960	903.961	902.060	-2.960	903.842	903.961	905.060
180280	905.018	-2.957	903.958	902.018	-2.957	903.842	903.958	905.018
180285	904.976	-2.954	903.955	901.976	-2.954	903.842	903.955	904.976
180290	904.934	-2.951	903.952	901.934	-2.951	903.842	903.952	904.934
180295	904.892	-2.948	903.949	901.892	-2.948	903.842	903.949	904.892
180300	904.850	-2.945	903.946	901.850	-2.945	903.842	903.946	904.850
180305	904.808	-2.942	903.943	901.808	-2.942	903.842	903.943	904.808
180310	904.766	-2.939	903.940	901.766	-2.939	903.842	903.940	904.766
180315	904.724	-2.936	903.937	901.724	-2.936	903.842	903.937	904.724
180320	904.682	-2.933	903.934	901.682	-2.933	903.842	903.934	904.682
180325	904.640	-2.930	903.931	901.640	-2.930	903.842	903.931	904.640
180330	904.598	-2.927	903.928	901.598	-2.927	903.842	903.928	904.598
180335	904.556	-2.924	903.925	901.556	-2.924	903.842	903.925	904.556
180340	904.514	-2.921	903.922	901.514	-2.921	903.842	903.922	904.514
180345	904.472	-2.918	903.919	901.472	-2.918	903.842	903.919	904.472
180350	904.430	-2.915	903.916	901.430	-2.915	903.842	903.916	904.430
180355	904.388	-2.912	903.913	901.388	-2.912	903.842	903.913	904.388
180360	904.346	-2.909	903.910	901.346	-2.909	903.842	903.910	904.346
180365	904.304	-2.906	903.907	901.304	-2.906	903.842	903.907	904.304
180370	904.262	-2.903	903.904	901.262	-2.903	903.842	903.904	904.262
180375	904.220	-2.900	903.901	901.220	-2.900	903.842	903.901	904.220
180380	904.178	-2.897	903.898	901.178	-2.897	903.842	903.898	904.178
180385	904.136	-2.894	903.895	901.136	-2.894	903.842	903.895	904.136
180390	904.094	-2.891	903.892	901.094	-2.891	903.842	903.892	904.094
180395	904.052	-2.888	903.889	901.052	-2.888	903.842	903.889	904.052
180400	904.010	-2.885	903.886	901.010	-2.885	903.842	903.886	904.010
180405	903.968	-2.882	903.883	900.968	-2.882	903.842	903.883	903.968
180410	903.926	-2.879	903.880	900.926	-2.879	903.842	903.880	903.926
180415	903.884	-2.876	903.877	900.884	-2.876	903.842	903.877	903.884
180420	903.842	-2.873	903.874	900.842	-2.873	903.842	903.874	903.842
180425	903.800	-2.870	903.871	900.800	-2.870	903.842	903.871	903.800
180430	903.758	-2.867	903.868	900.758	-2.867	903.842	903.868	903.758
180435	903.716	-2.864	903.865	900.716	-2.864	903.842	903.865	903.716
180440	903.674	-2.861	903.862	900.674	-2.861	903.842	903.862	903.674
180445	903.632	-2.858	903.859	900.632	-2.858	903.842	903.859	903.632
180450	903.590	-2.855	903.856	900.590	-2.855	903.842	903.856	903.590
180455	903.548	-2.852	903.853	900.548	-2.852	903.842	903.853	903.548
180460	903.506	-2.849	903.850	900.506	-2.849	903.842	903.850	903.506
180465	903.464	-2.846	903.847	900.464	-2.846	903.842	903.847	903.464
180470	903.422	-2.843	903.844	900.422	-2.843	903.842	903.844	903.422
180475	903.380	-2.840	903.841	900.380	-2.840	903.842	903.841	903.380
180480	903.338	-2.837	903.838	900.338	-2.837	903.842	903.838	903.338
180485	903.296	-2.834	903.835	900.296	-2.834	903.842	903.835	903.296
180490	903.254	-2.831	903.832	900.254	-2.831	903.842	903.832	903.254
180495	903.212	-2.828	903.829	900.212	-2.828	903.842	903.829	903.212
180500	903.170	-2.825	903.826	900.170	-2.825	903.842	903.826	903.170
180505	903.128	-2.822	903.823	900.128	-2.822	903.842	903.823	903.128
180510	903.086	-2.819	903.820	900.086	-2.819	903.842	903.820	903.086
180515	903.044	-2.816	903.817	900.044	-2.816	903.842	903.817	903.044
180520	903.002	-2.813	903.814	900.002	-2.813	903.842	903.814	903.002
180525	902.960	-2.810	903.811	900.960	-2.810	903.842	903.811	902.960
180530	902.918	-2.807	903.808	900.918	-2.807	903.842	903.808	902.918
180535	902.876							





CH	VERTICAL CURVE LENGTH (L)	GRADES (G)
18500	110	R 1 IN 110
18520	114	R 1 IN 114
18540	107	R 1 IN 107
18560	120	R 1 IN 120
18580	110	R 1 IN 110
18600	225	R 1 IN 225
18620	110	R 1 IN 110
18640	102	R 1 IN 102
18660	100	R 1 IN 100
18680	126	R 1 IN 126
18700	325	R 1 IN 325
18720	200	R 1 IN 200
18740	110	R 1 IN 110
18760	100	R 1 IN 100

- NOTE:
- EXISTING RAIL LEVEL: ———
  - PRO. RAIL LEVEL: ———
  - EXISTING GROUND LEVEL: ———
  - DISMANTLED SHOWN AS: - - - - -
  - LAND BOUNDARY DISTANCE IN PLAN ARE THE PERPENDICULAR OFFSET FROM THE EXISTING MAIN LINE AND ARE ONLY INDICATIVE. FOR ACCURATE MEASUREMENT RESPECTIVE LAND PLAN TO BE VERIFIED.
  - PINK BOOK ITEM NO.30 OF 2018/19.
  - THE CHAINAGE AND EXISTING LEVELS GIVEN IN THE WORKING SECTION ARE ACTUALLY MEASURED AND VERIFIED AT SITE.
  - THE CLASS OF ROUTE IS GROUP 'D', THE PROPOSAL SPEED OF SECTION IS 100KM/HR. (SUBJECT TO SPEED RESTRICTIONS)
  - TOP WIDTH OF FORMATION IS ENSURED AS 3.925M FROM THE CENTER LINE OF NEAREST TRACK.
  - NECESSARY DRAINAGE ARRANGEMENTS TO SUIT SITE CONDITIONS WILL BE PROVIDED AS PER STANDARD BY ENGINEER- IN-CHARGE.
  - MINIMUM 5.30M TRACK CENTER SHOULD BE ENSURED (AFTER CURVES ALLOWANCES AND SLEW).
  - VERTICAL CURVES & SPEED POTENTIAL DETAILS OF BYPL-HSRA SECTION ARE SUBMITTED IN E-Das AS ATTACHMENTS.
  - ALL THE YARD PLANS (BYPL-HSRA SECTION) WILL BE SUBMITTED TO CPDE-SWR FOR APPROVAL.

L/C NO	CHAINAGE	MANNED/ UNMANNED	ENGINEERING/ TRAFFIC	CLASS OF LC	INTERLOCKED/ NON-INTERLOCKED	TVU	ENG/PRO. RL DIFFERENCE	REMARKS
125	185676.38	MANNED	ENGINEERING	'SPL' CLASS	NON-INTERLOCKED	56330	MAY-18	-0.806
126	187167.79	MANNED	ENGINEERING	'A' CLASS	NON-INTERLOCKED	23280	MAY-18	0.073
127	187641	MANNED	ENGINEERING	'A' CLASS	INTERLOCKED	49110	MAY-18	-0.066

HQ/SWR/UBL	<b>K RIDE</b>
DYCE/TRACK/ITQ	AGM/CIVIL
CTE/SWR	GM/CIVIL

**SOUTH WESTERN RAILWAY**

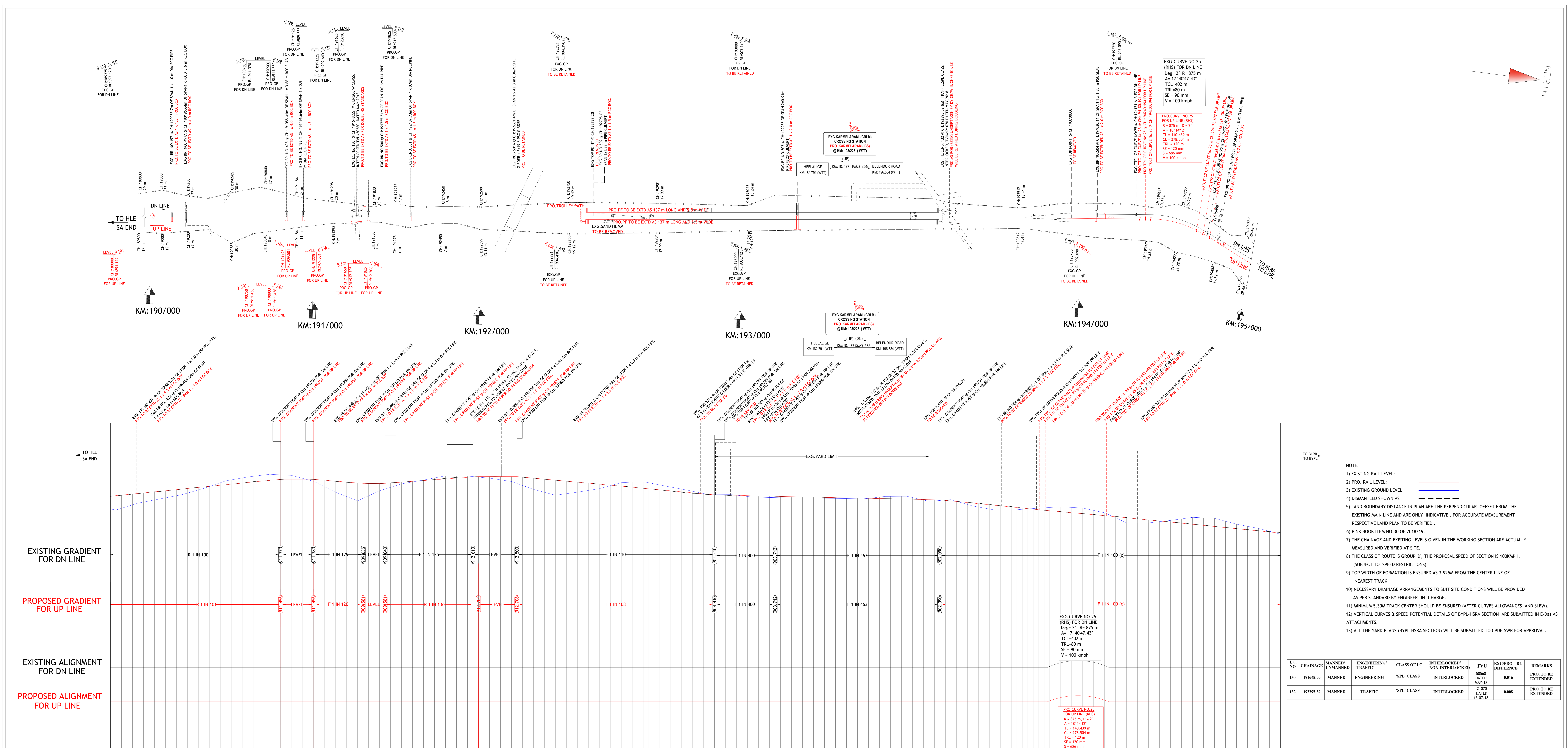
**RAIL INFRASTRUCTURE DEVELOPMENT COMPANY (KARNATAKA) LIMITED**

**BENGALURU DIVISION**

**SALEM - YESVANTPUR SECTION**

**PROPOSED DOUBLING OF TRACK BETWEEN BAIYAPPANAHALLI 'A' PANEL AND HSUR STATIONS WORKING PLAN & WORKING SECTION FROM CH:185000 TO 190250**





- NOTE:
- 1) EXISTING RAIL LEVEL: ————
  - 2) PRO. RAIL LEVEL: ————
  - 3) EXISTING GROUND LEVEL: ————
  - 4) DISMANTLED SHOWN AS: - - - - -
  - 5) LAND BOUNDARY DISTANCE IN PLAN ARE THE PERPENDICULAR OFFSET FROM THE EXISTING MAIN LINE AND ARE ONLY INDICATIVE. FOR ACCURATE MEASUREMENT RESPECTIVE LAND PLAN NO.30 OF 2018/19.
  - 6) PINK BOOK ITEM NO.30 OF 2018/19.
  - 7) THE CHAINAGE AND EXISTING LEVELS GIVEN IN THE WORKING SECTION ARE ACTUALLY MEASURED AND VERIFIED AT SITE.
  - 8) THE CLASS OF ROUTE IS GROUP 'D', THE PROPOSAL SPEED OF SECTION IS 100KM/PH. (SUBJECT TO SPEED RESTRICTIONS)
  - 9) TOP WIDTH OF FORMATION IS ENSURED AS 3.925M FROM THE CENTER LINE OF NEAREST TRACK.
  - 10) NECESSARY DRAINAGE ARRANGEMENTS TO SUIT SITE CONDITIONS WILL BE PROVIDED AS PER STANDARD BY ENGINEER- IN- CHARGE.
  - 11) MINIMUM 5.30M TRACK CENTER SHOULD BE ENSURED (AFTER CURVES ALLOWANCES AND SLEW).
  - 12) VERTICAL CURVES & SPEED POTENTIAL DETAILS OF BYPL-HSRA SECTION ARE SUBMITTED IN E-DWG AS ATTACHMENTS.
  - 13) ALL THE YARD PLANS (BYPL-HSRA SECTION) WILL BE SUBMITTED TO CPD-SWR FOR APPROVAL.

LC NO	CHAINAGE	MANNED/ UNMANNED	ENGINEERING/ TRAFFIC	CLASS OF LC	INTERLOCKED/ NON-INTERLOCKED	TVU	EXG.PRO. RL DIFFERENCE	REMARKS
130	191646.55	MANNED	ENGINEERING	'SPL' CLASS	INTERLOCKED	50960	0.016	PRO. TO BE EXTENDED
132	193395.52	MANNED	TRAFFIC	'SPL' CLASS	INTERLOCKED	121070	0.008	PRO. TO BE EXTENDED

HQ:SWR/UBL	<b>K RIDE</b>
DYCE/TRACK/HQ	AGM/CIVIL
CTE/SWR	GM/CIVIL

SOUTH WESTERN RAILWAY

**K RIDE** RAIL INFRASTRUCTURE DEVELOPMENT COMPANY (KARNATAKA) LIMITED

**BENGALURU DIVISION**

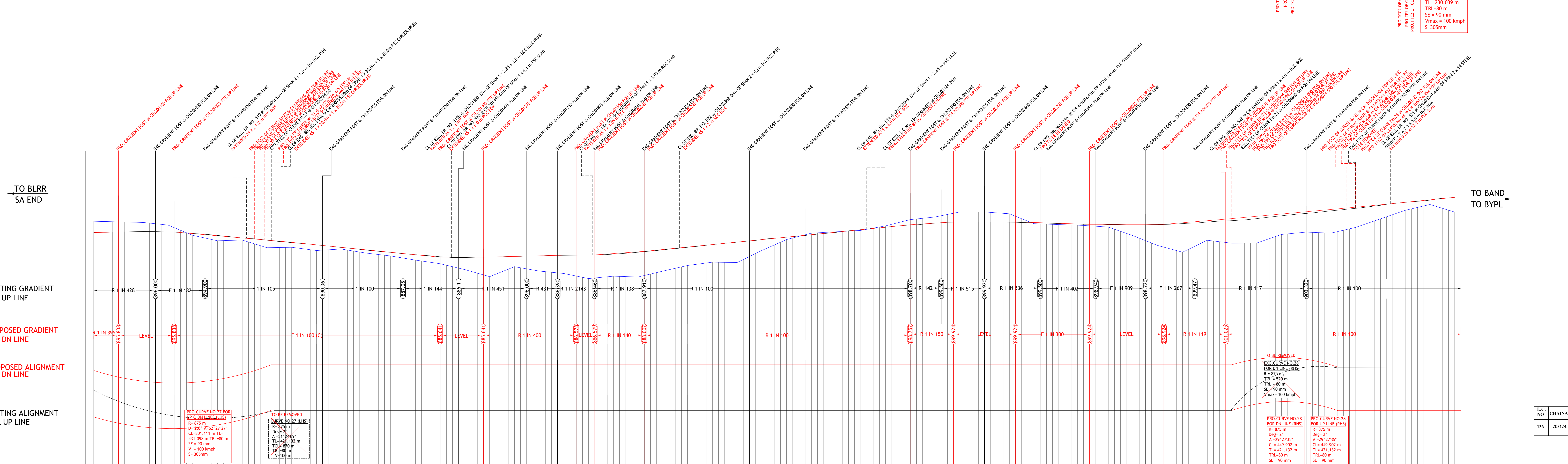
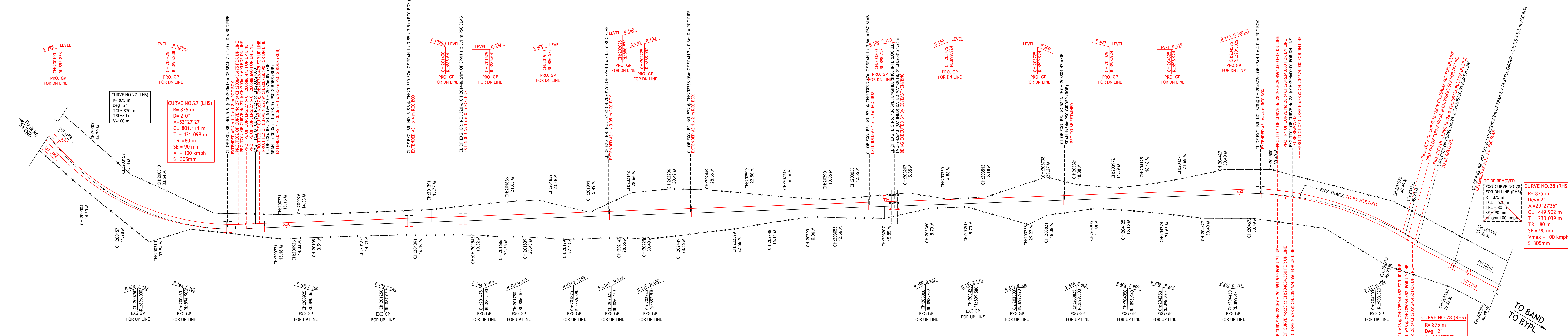
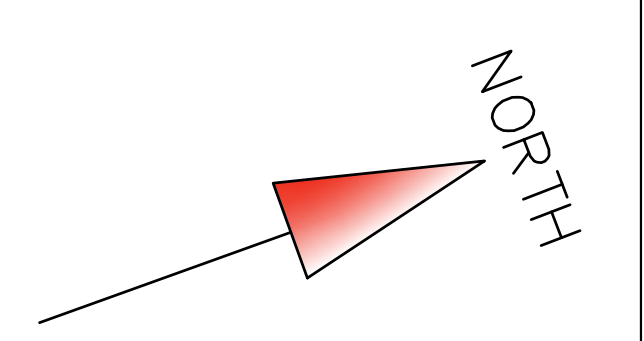
**SALEM - YESVANTPUR SECTION**

PROPOSED DOUBLING OF TRACK BETWEEN BAIYAPPANAHALLI 'A' PANEL AND HOSUR STATIONS  
WORKING PLAN & WORKING SECTION  
FROM CH:190000 TO 195250









- NOTE:
- 1) EXISTING RAIL LEVEL: ————
  - 2) PRO. RAIL LEVEL: ————
  - 3) EXISTING GROUND LEVEL: ————
  - 4) DISHANTLED SHOWN AS: - - - - -
  - 5) ALL THE LEVELS ARE CONNECTED WITH GTS BENCH MARK.
  - 6) LAND BOUNDARY DISTANCE IN PLAN ARE THE PERPENDICULAR OFFSET FROM THE EXISTING MAIN LINE AND ARE ONLY INDICATIVE. FOR ACCURATE MEASUREMENT RESPECTIVE LAND PLAN TO BE VERIFIED.
  - 7) PINK BOOK ITEM NO. 30 OF 2018/19.
  - 8) THE CHANGE AND EXISTING LEVELS GIVEN IN THE WORKING SECTION ARE ACTUALLY MEASURED AND VERIFIED AT SITE.
  - 9) THE FORMATION WORK IS EXECUTED AS PER THE SPECIFICATIONS CONTAINED IN GE-14.
  - 10) THE CLASS OF ROUTE IS GROUP 'D', THE PROPOSAL SPEED OF SECTION IS 100KM/PH. (SUBJECT TO SPEED RESTRICTIONS)
  - 11) TOP WIDTH OF FORMATION IS ENSURED AS 3.925M FROM THE CENTER LINE OF NEAREST TRACK.
  - 12) NECESSARY DRAINAGE ARRANGEMENTS TO SUIT SITE CONDITIONS WILL BE PROVIDED AS PER STANDARD BY ENGINEER-IN-CHARGE.
  - 13) MINIMUM 5.30M TRACK CENTER SHOULD BE ENSURED (AFTER CURVES ALLOWANCES AND SLEW).
  - 14) VERTICAL CURVES & SPEED POTENTIAL DETAILS OF BYPL-HSRA SECTION ARE SUBMITTED IN E-Das ATTACHMENTS.
  - 15) ALL YARD PLANS (BYPL-HSRA SECTION) WILL BE SUBMITTED TO CPDE-SWR FOR APPROVAL.

L.C. NO	CHAINAGE	MANNED / UNMANNED	ENGINEERING / TRAFFIC	CLASS OF LOC	INTERLOCKED / NON-INTERLOCKED	TVU	EXG-PRO. RL DIFFERENCE	REMARKS
1/6	203124.26	MANNED	ENGINEERING	SPL CLASS	INTERLOCKED	342646 MAY 2018.	0.023	PRO TO BE EXTENDED

HQ-SWR/UBL	<b>K RIDE</b>
DYCE/TRACK/HQ	AGM/CIVIL
CTE-SWR	GM/CIVIL

**SOUTH WESTERN RAILWAY**  
**K RIDE**  
**RAIL INFRASTRUCTURE DEVELOPMENT COMPANY (KARNATAKA) LIMITED**  
**BENGALURU DIVISION**  
**SALEM - YESVANTPUR SECTION**

**PROPOSED DOUBLING OF TRACK BETWEEN BAIYAPPANAHALLI 'A' PANEL AND HOSUR STATIONS WORKING PLAN & WORKING SECTION FROM CH:200000 TO 205500**

SCALE - HOR:1:5000, VER:1:500 SHEET NO : 10 OF 10

DRG.NO:KRIDE/DL/BH/026 - 2020

STATIONING	TRACK CENTRE	DIFFERENCE OF RL	PRO. RAIL LEVEL FOR DN LINE	EXG. RAIL LEVEL FOR UP LINE	CUTTING	EXG. FORMATION LEVEL FOR UP LINE	PRO. FORMATION LEVEL FOR DN LINE	GROUND LEVEL	CHAINAGE
200000	730.000	-0.005	895.505	895.460	5.313	894.847	894.847	900.160	200000
200005	730.000	-0.011	895.595	895.560	5.175	894.922	894.922	900.165	200005
200010	730.000	-0.005	895.775	895.760	4.951	895.042	895.042	900.170	200010
200015	730.000	0.002	895.935	895.930	4.728	895.120	895.120	900.175	200015
200020	730.000	-0.102	896.135	896.100	4.530	895.200	895.200	900.180	200020
200025	730.000	-0.192	896.365	896.330	4.338	895.290	895.290	900.185	200025
200030	730.000	-0.270	896.615	896.580	4.163	895.390	895.390	900.190	200030
200035	730.000	-0.335	896.885	896.830	3.995	895.500	895.500	900.195	200035
200040	730.000	-0.385	897.165	897.090	3.833	895.620	895.620	900.200	200040
200045	730.000	-0.420	897.455	897.360	3.677	895.750	895.750	900.205	200045
200050	730.000	-0.440	897.755	897.640	3.523	895.890	895.890	900.210	200050
200055	730.000	-0.445	898.065	897.930	3.370	896.040	896.040	900.215	200055
200060	730.000	-0.435	898.385	898.200	3.218	896.200	896.200	900.220	200060
200065	730.000	-0.410	898.715	898.570	3.067	896.370	896.370	900.225	200065
200070	730.000	-0.370	899.055	898.930	2.917	896.550	896.550	900.230	200070
200075	730.000	-0.315	899.405	899.290	2.767	896.740	896.740	900.235	200075
200080	730.000	-0.245	899.765	899.740	2.617	896.940	896.940	900.240	200080
200085	730.000	-0.160	900.135	900.120	2.467	897.150	897.150	900.245	200085
200090	730.000	-0.060	900.515	900.510	2.317	897.370	897.370	900.250	200090
200095	730.000	0.040	900.905	900.910	2.167	897.600	897.600	900.255	200095
200100	730.000	0.135	901.305	901.310	2.017	897.840	897.840	900.260	200100
200105	730.000	0.215	901.715	901.720	1.867	898.090	898.090	900.265	200105
200110	730.000	0.280	902.135	902.140	1.717	898.350	898.350	900.270	200110
200115	730.000	0.330	902.565	902.570	1.567	898.620	898.620	900.275	200115
200120	730.000	0.365	903.005	903.010	1.417	898.900	898.900	900.280	200120
200125	730.000	0.385	903.455	903.460	1.267	899.190	899.190	900.285	200125
200130	730.000	0.390	903.915	903.920	1.117	899.490	899.490	900.290	200130
200135	730.000	0.380	904.385	904.390	0.967	899.800	899.800	900.295	200135
200140	730.000	0.355	904.865	904.870	0.817	900.120	900.120	900.300	200140
200145	730.000	0.315	905.355	905.360	0.667	900.450	900.450	900.305	200145
200150	730.000	0.260	905.855	905.860	0.517	900.790	900.790	900.310	200150
200155	730.000	0.190	906.365	906.370	0.367	901.140	901.140	900.315	200155
200160	730.000	0.105	906.885	906.890	0.217	901.500	901.500	900.320	200160
200165	730.000	0.005	907.415	907.420	0.067	901.870	901.870	900.325	200165
200170	730.000	-0.090	907.955	907.960	-0.083	902.250	902.250	900.330	200170
200175	730.000	-0.170	908.505	908.510	-0.233	902.640	902.640	900.335	200175
200180	730.000	-0.235	909.065	909.070	-0.383	903.040	903.040	900.340	200180
200185	730.000	-0.285	909.635	909.640	-0.533	903.450	903.450	900.345	200185
200190	730.000	-0.320	910.215	910.220	-0.683	903.870	903.870	900.350	200190
200195	730.000	-0.340	910.805	910.810	-0.833	904.300	904.300	900.355	200195
200200	730.000	-0.345	911.405	911.410	-0.983	904.740	904.740	900.360	200200
200205	730.000	-0.335	912.015	912.020	-1.133	905.190	905.190	900.365	200205
200210	730.000	-0.310	912.635	912.640	-1.283	905.650	905.650	900.370	200210
200215	730.000	-0.270	913.265	913.270	-1.433	906.120	906.120	900.375	200215
200220	730.000	-0.215	913.905	913.910	-1.583	906.600	906.600	900.380	200220
200225	730.000	-0.145	914.555	914.560	-1.733	907.090	907.090	900.385	200225
200230	730.000	-0.060	915.215	915.220	-1.883	907.590	907.590	900.390	200230
200235	730.000	0.040	915.885	915.890	-2.033	908.100	908.100	900.395	200235
200240	730.000	0.130	916.565	916.570	-2.183	908.620	908.620	900.400	200240
200245	730.000	0.200	917.255	917.260	-2.333	909.150	909.150	900.405	200245
200250	730.000	0.250	917.955	917.960	-2.483	909.690	909.690	900.410	200250
200255	730.000	0.280	918.665	918.670	-2.633	910.240	910.240	900.415	200255
200260	730.000	0.290	919.385	919.390	-2.783	910.800	910.800	900.420	200260
200265	730.000	0.280	920.115	920.120	-2.933	911.370	911.370	900.425	200265
200270	730.000	0.250	920.855	920.860	-3.083	911.950	911.950	900.430	200270
200275	730.000	0.200	921.605	921.610	-3.233	912.540	912.540	900.435	200275
200280	730.000	0.130	922.365	922.370	-3.383	913.140	913.140	900.440	200280
200285	730.000	0.040	923.135	923.140	-3.533	913.750	913.750	900.445	200285
200290	730.000	-0.060	923.915	923.920	-3.683	914.370	914.370	900.450	200290
200295	730.000	-0.150	924.705	924.710	-3.833	915.000	915.000	900.455	200295
200300	730.000	-0.220	925.505	925.510	-3.983	915.640	915.640	900.460	200300
200305	730.000	-0.270	926.315	926.320	-4.133	916.290	916.290	900.465	200305
200310	730.000	-0.300	927.135	927.140	-4.283	916.950	916.950	900.470	200310
200315	730.000	-0.310	927.965	927.970	-4.433	917.620	917.620	900.475	200315
200320	730.000	-0.300	928.805	928.810	-4.583	918.300	918.300	900.480	200320
200325	730.000	-0.270	929.655	929.660	-4.733	918.990	918.990	900.485	200325
200330	730.000	-0.220	930.515	930.520	-4.883	919.690	919.690	900.490	200330
200335	730.000	-0.150	931.385	931.390	-5.033	920.400	920.400	900.495	200335
200340	730.000	-0.060	932.265	932.270	-5.183	921.120	921.120	900.500	200340
200345	730.000	0.040	933.155	933.160	-5.333	921.850	921.850	900.505	200345
200350	730.000	0.130	934.055	934.060	-5.483	922.590	922.590	900.510	200350
200355	730.000	0.200	934.965	934.970	-5.633	923.340	923.340	900.515	200355
200360	730.000	0.250	935.885	935.890	-5.783	924.100	924.100	900.520	200360
200365	730.000	0.280	936.815	936.820	-5.933	924.870	924.870	900.525	200365
200370	730.000	0.290	937.755	937.760	-6.083	925.650	925.650	900.530	200370
200375	730.000	0.280	938.705	938.710	-6.233	926.440	926.440	900.535	200375
200380	730.000	0.250	939.665	939.670	-6.383	927.240	927.240	900.540	200380
200385	730.000	0.200	940.635	940.640	-6.533	928.050	928.050	900.545	200385
200390	730.000	0.130	941.615	941.620	-6.683	928.870	928.870	900.550	200390
200395	730.000	0.040	942.605	942.610	-6.833	929.700	929.700	900.555	200395
200400	730.000	-0.060	943.605	943.610	-6.983	930.540	930.540	900.560	200400
200405	730.000	-0.150	944.615	944.620	-7.133	931.390	931.390	900.565	200405
200410	730.000	-0.220	945.635	945.640	-7.283	932.250	932.250	900.570	200410
200415	730.000	-0.270	946.665	946.670	-7.433	933.120	933.120	900.575	200415
200420	730.000	-0.300	947.705	947.710	-7.583	934.000	934.000	900.580	200420
200425	730.000	-0.310	948.755	948.760	-7.733	934.890	934.890	900.585	200425
200430	730.000	-0.300	949.815	949.820	-7.883	935.790	935.790	900.590	200430
200435	730.000	-0.270	950.885	950.890	-8.033	936.700	936.700	900.595	200435
200440	730.000	-0.220	951.965	951.970	-8.183	937.620	937.620	900.600	200440
200445	730.000	-0.150	953.055	953.060	-8.333	938.5			