

# BSRP

(Bengaluru Suburban Rail Project)

## India's Most Integrated Suburban Rail Project

Rural to Urban , Global to Local

ಕ-ರೈಡ್



A JV of Govt. of Karnataka and Ministry of Railways



One Suburban Metro Train to connect all



**148.17km**  
Route Network



**57**  
New Stations



**4 Corridors**  
Connecting Bengaluru  
360 degrees



**15,767** crore.  
Project cost



**10 Lakh**  
Daily Passengers in  
**2026**



**BSRP**

## AGILITY IN MOBILITY



### CONNECTIVITY

BSRP will link Bengaluru to its satellite townships, suburbs, surrounding rural areas and provide a Mass Rail based Rapid Transit System in a period of 6 years



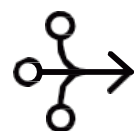
### CONVENIENCE

With its Air-conditioned and Metro-like trains, BSRP will provide a speedier, safer and comfortable mode of travel to lakhs of rural and urban commuters



### COST EFFECTIVE

BSRP fares will be affordable. 148.17 Km will be built at a total cost of Rs.15,767 crores through innovative project financing and land monetization



### CONVERGENCE

BSRP will integrate multiple modes of transport. At more than 60% of its stations, passengers will be able to inter-change with other modes of transport like Indian Railways and local Metro network



### COMMERCIAL STIMULUS

BSRP's 57 new stations, hosting a wide spectrum of commercial activities will promote Make in India and Aatmanirbharta initiative and boost Transit-Oriented Development



### CLEAN COMMUTE

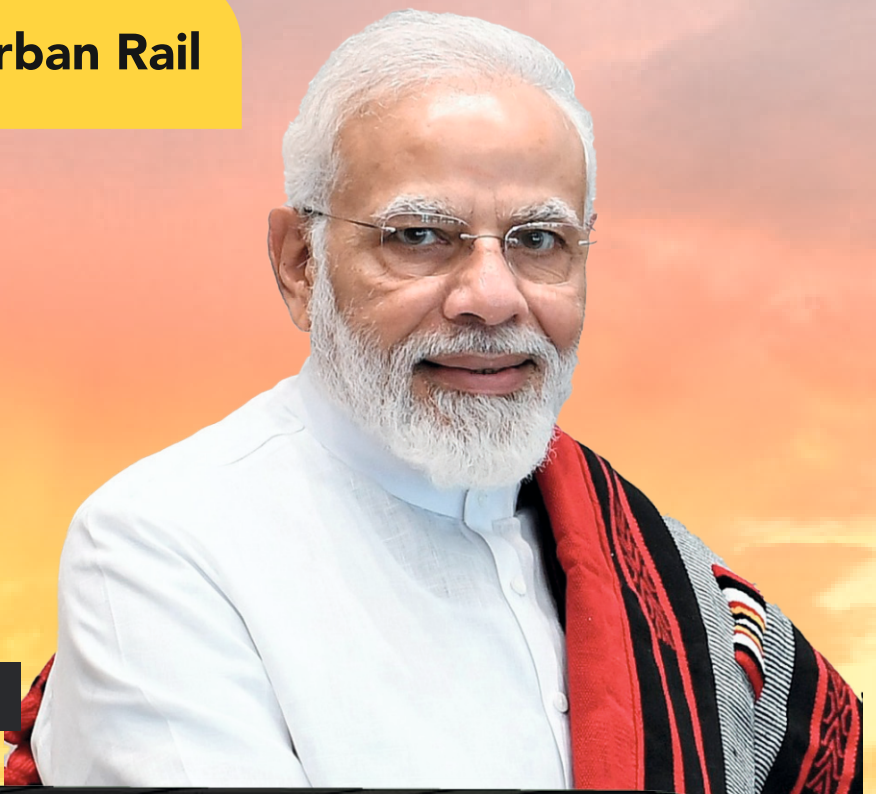
BSRP will reduce carbon footprints and provide a sustainable mobility solution to more than 10 lakh daily commuters





Sabka Rail

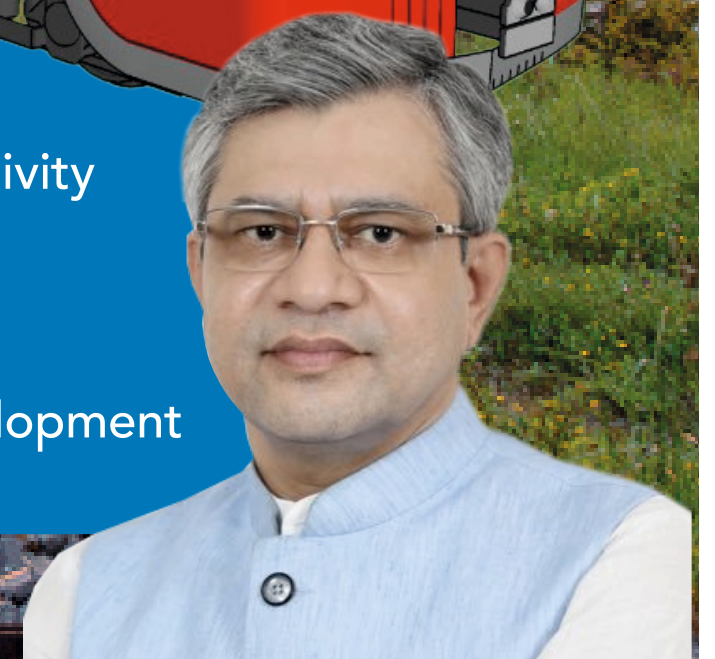
Suburban Rail



Samagra

Samparka

- B** Better Rural and Urban Connectivity
- S** Seamless and Multi Modal
- R** Rapid and Environment Friendly
- P** Promotes Transit Oriented Development







## 4 SA-M-PAR-KA CORRIDORS

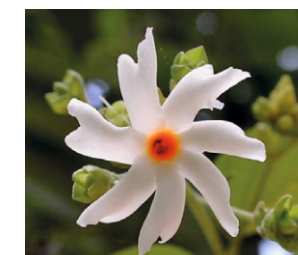
The 4 BSRP corridors are named after 4 regional flowers.



**SAMPIGE**  
[Champa]



**MALLIGE**  
[Chameli]



**PARIJAATA**  
[Prajakta]



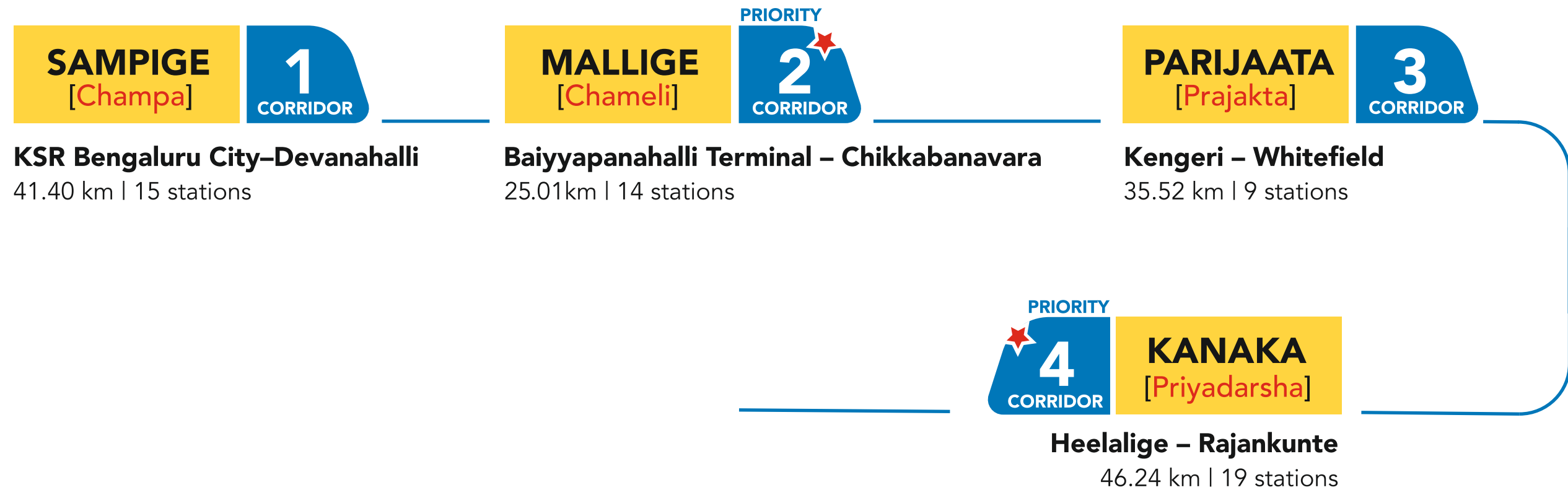
**KANAKA**  
[Priyadarsha]

Together, they form the word  
**SA-M-PAR-KA**  
(Connectivity)





## 4 SA-M-PAR-KA CORRIDORS



## IMPLEMENTING AGENCY FOR BSRP

A Joint venture of Government of Karnataka and the Ministry of Railways created to

- D** Deliver World Class Rail Infrastructure in an Agile and Innovative Manner
- E** Enrich Rural - Urban Connectivity
- S** Synergize Multiple Modes of Public Transport and Deliver a Seamless Mobility Solution.
- H** Holistic Transit Oriented Development boosting Sustainability



# S-M-A-R-T STATION



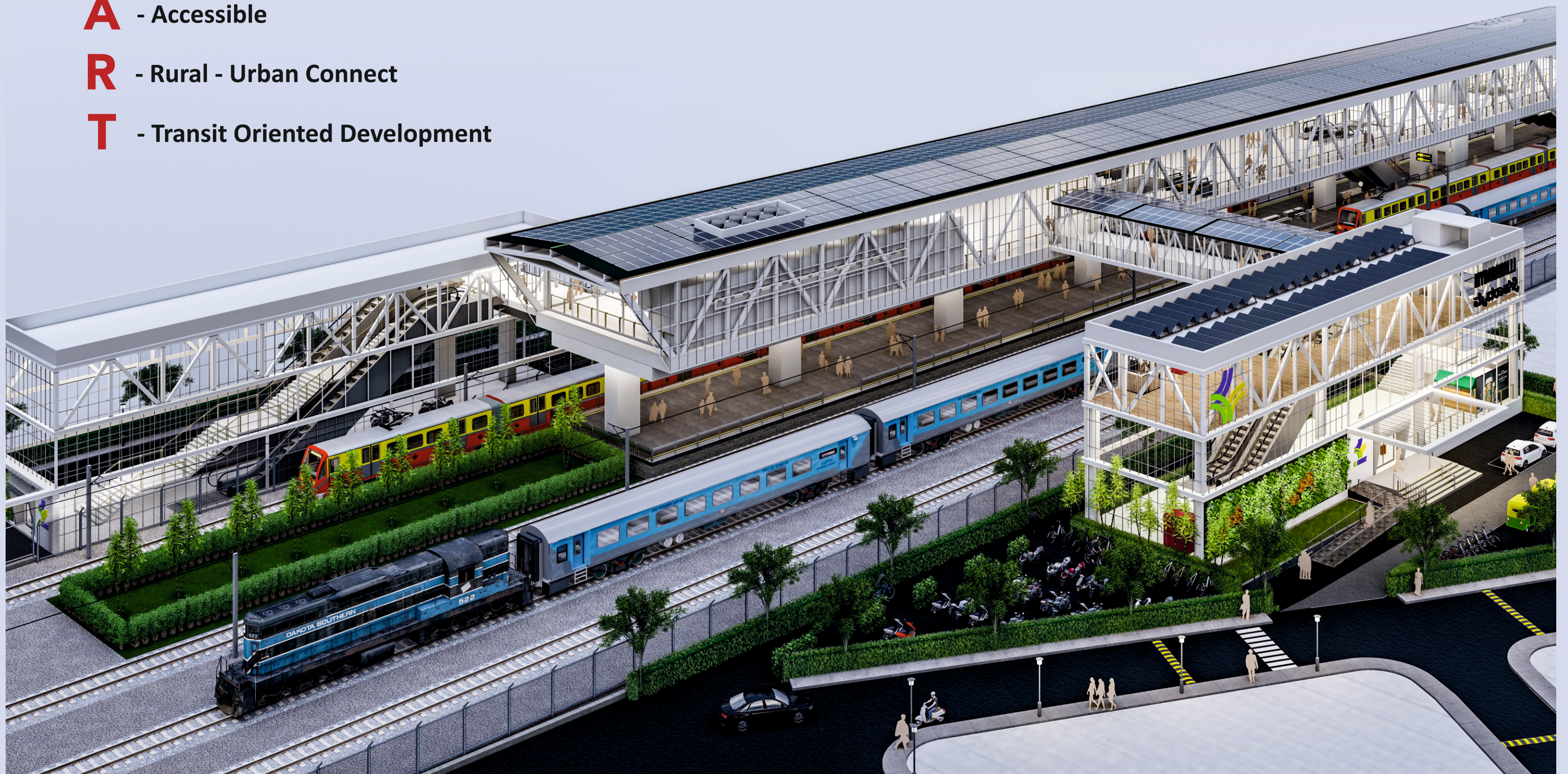
**S** - Sustainable

**M** - Multimodal

**A** - Accessible

**R** - Rural - Urban Connect

**T** - Transit Oriented Development





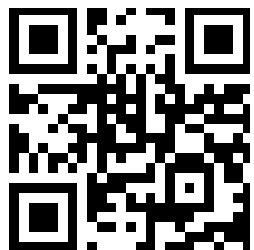


# S-M-A-R-T STATION





All for  
**RAIL,**  
RAIL for All



KRIDE Website

Reg. Office : Samparka Soudha, 1st Floor, Opp. Orion Mall,  
Dr. Rajkumar Road, Rajajinagar 1st Block, Bangalore -560010.

Email: [md@kride.in](mailto:md@kride.in) | Website : [www.kride.in](http://www.kride.in)

CIN : U60100KA2000PLC028171