



SAMPARKA

The BSRP Newsletter...



House Journal of K-RIDE

Issue: 09

March 2026

K-RIDE holds Citizens' Stakeholders Outreach Programme



Rail Infrastructure Development Company (Karnataka) Limited (K-RIDE) conducted a Citizens' Stakeholders Outreach Programme on 21st January 2026 under the chairmanship of Shri Lakshman Singh, Managing Director, K-RIDE, reaffirming the organisation's commitment to transparent, participative and citizen-centric infrastructure development. The programme was attended by Shri Rajesh Kumar Singh, Director (Projects & Planning) and Shri Awadesh Mehta, Director (Business Development & Finance), along with other senior officers of K-RIDE. The interaction witnessed enthusiastic participation from eminent citizens' groups, resident associations and NGOs, who expressed keen interest in the progress of the Bengaluru Suburban Rail Project (BSRP) being implemented by K-RIDE.

During the programme, detailed presentations and discussions were held on the current status, progress and upcoming milestones of K-RIDE projects. Citizens were comprehensively briefed on project timelines, planning aspects and implementation challenges, followed by an open forum for constructive interaction. The views, opinions, and observations shared by the participants were carefully noted and acknowledged. Stakeholders meeting organized by K-RIDE reinforces K-RIDE's inclusive and responsive approach to project execution.

KRIDE celebrates Republic Day 2026



KRIDE celebrated Republic day 2026 near Yashwanthpur station of Corridor-2. Addressing the gathering after unfurling the national flag, MD, KRIDE, Shri Lakshman Singh said "Republic Day is a reminder of duty and service. With all corridor alignments approved by Indian Railways and significant progress on ground, K-RIDE is firmly on the path of execution"

MD CORNER



Shri Lakshman Singh (IRSE),
MANAGING DIRECTOR, KRIDE

Season's greetings to all our readers!

Over the past few years, the Bengaluru Suburban Transport Project (BSTP) has navigated several complex challenges. I am pleased to share that, through sustained effort, coordination and the unwavering commitment of our teams and stakeholders, we have made significant progress in overcoming many of these hurdles.

In recent months, I have by walk conducted inspections along the entire alignment of Corridor2. These field visits have provided firsthand insights into the areas that required immediate attention and timely intervention. Through focused efforts and collaborative engagement with various stakeholder departments and agencies, we have been able to address several critical issues.

One of the most notable milestones achieved is the successful resolution and streamlining of land acquisition process. Today, I am happy to report that 100% of the land required for Corridor 2 - including railway, private, defence, and other parcels - has been secured and is ready to be handed over for seamless execution of work by successful bidder.

In another encouraging development, the alignment for all four corridors has now received approval from the Railways. With this crucial step completed, the calendar for tender calling and award of works has been set in motion, marking an important transition from planning to accelerated implementation. As we move forward, our focus remains firmly on maintaining momentum, and delivering a modern suburban rail system. I thank all our stakeholders and well-wishers for their continued support and look forward to sharing many more milestones in the months ahead.



CALL-ONS AND INSPECTIONS



On February 13th 2026, Shri Lakshman Singh, MD, K-RIDE, called on Shri Vivek Kumar Gupta, Member (Infrastructure), Railway Board and Ex-officio Secretary to the Government of India, at New Delhi and congratulated him on assuming his new responsibility

The MD briefed him on the progress and future planning of the Bengaluru Suburban Rail Project. The Member assured full coordination and support for the expeditious execution of this crucial, game-changing project for Bengaluru's public transport



On February 13th 2026, Shri Lakshman Singh, Managing Director, K-RIDE, called on Smt. Manjusha Jain, Member (Finance), Railway Board and Ex-Officio Secretary to the Government of India, at New Delhi.

Discussions focused on financial planning, and timely resource mobilisation for the Bengaluru Suburban Rail Project, with the Member assuring continued cooperation for advancing this key mobility initiative of BSRP in Bengaluru.



On 31st January 2026, Shri Lakshman Singh, MD, K-RIDE inspected the ongoing works of Corridor-4/Kanaka Line of BSRP. He took stock of the works related to elimination of Level crossings by constructing ROB's for LC 134 (Chinappanahalli), LC 130 (Kodathi gate), LC 127 (Huskur), LC 125 (Singena Agrahara and Road U Bridge for LC126 (Chintanamadiwala).

These elimination of LCs are necessary for Corridor-4 connectivity other than the fact that it is of immense convenience to the public.

MD directed to expedite the land acquisition for the proposed ROB's/ RUB and adhere to the project deadlines.

On 31st January 2026, Shri Lakshman Singh, MD, K-RIDE visited Huskur BSRP station of Corridor-4/ Kanaka line. He inspected the ongoing main box works in which 90% of foundation for station box is completed. MD directed the Contractor to expedite the construction works by mobilizing more resources.



On 4th February 2026, Shri Lakshman Singh, MD, K-RIDE, inspected the priority-1 section of Corridor-4 (Kanaka Line) of the Bengaluru Suburban Rail Project, from Benniganahalli to Channasandra (BSRP Ch. 22+386 to 33+947). Benniganahalli is an interchange station between C2&C4.

The section from Benniganahalli to Channasandra of C4 is elevated via - duct having common corridor with BMRL of appr 500mtrs where BMRL is at Level 2 and BSRP at Level 1.

MD inspected the Channasandra BSRP Station works (Ch. 24+005 to 24+210).

He also assessed cast-in-situ RCC box construction activities at Channasandra.

(Contd...)

CALL-ONS AND INSPECTIONS



Consequent to Indian Railways' finalisation and approval of the alignment of Corridor-1 / Sampige Line comprising C1 (Bengaluru City Railway Station to Devanahalli) with Airport Link - Shri Lakshman Singh Managing Director, K-RIDE, undertook a detailed field inspection of the Airport Link alignment On January 15th 2026.

During the inspection, the MD directed that station planning activities be initiated immediately to enable timely completion of land acquisition. He further instructed the Land Acquisition Department to undertake an integrated and time-bound approach for all private land acquisition.

Emphasising the strategic importance of the project, the MD emphasized that Bengaluru, as the fastest-growing city in the country, requires robust and future-ready transport infrastructure. He stated that the Airport Corridor is the most critical and long-awaited corridor, with the potential to significantly enhance urban mobility.

The MD urged all concerned officials to take up execution on a war-footing to ensure timely delivery of this vital infrastructure project.



On 14th January 2026, MD, KRIDE along with Director (Projects & Planning), KRIDE, GC and contractors, inspected the station works and alignment along Corridor 2, Mallige Line of BSRP between Banaswadi and Kasturinaragar.

MD inspected on foot a length of 3.200 km (i.e., from Ch. 4.000 to 0.980km). This stretch involved at-grade work construction of earthwork in embankment, Earth Retaining Structure(ERS), Minor bridges & RUBs.

MD reviewed the feasibility of alignment & station locations. He also directed the officials to strictly adhere to the timelines.



(Contd...)

CALL-ONS AND INSPECTIONS



On 30th January 2026, Shri. Lakshman Singh, MD, K-RIDE, inspected the Soladevanahalli Depot site. During the visit MD reviewed in detail

- depot connectivity from BSRP Chikkabanavara station
- status of land acquisition for the connectivity
- depot boundary issues relating to existing infringements/encroachments

MD directed the officials to take quick action to expedite temporary fencing to secure handed over land and expedite the depot tendering works.

On 31st January 2026, Shri Lakshman Singh, MD, K-RIDE visited Huskur BSRP station of Corridor-4/ Kanaka line. He inspected the ongoing main box works where 90% of foundation for station box is completed and column works are in progress. MD directed the Contractor to expedite the construction works by mobilizing more resources.



On 10th February 2026, Shri Lakshman Singh, MD, K-RIDE inspected the ongoing works on Corridor-4/ Kanaka Line of BSRP starting from Channasandra (BSRP Ch. 24+400) to Horamavu station (BSRP Ch. 26+075). MD, reviewed the land acquisition requirement during the inspection and directed the land team to complete the remaining land acquisition at the earliest. Shri Lakshman Singh, MD, K-RIDE took stock of the ongoing works at Horamavu Station in Corridor-4 and instructed the Contractor to immediately take up the Station construction activities.



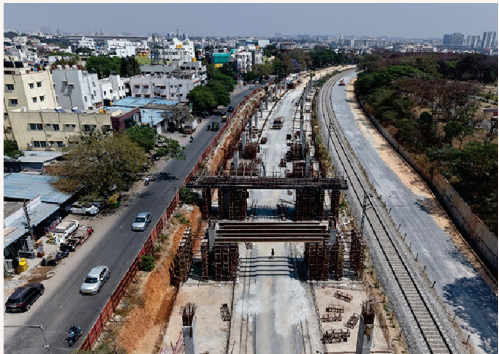
Station Works Progress

Corridor 2/MALLIGE LINE: Station works Packages C2A & C2B



PACKAGE-C2A: “Construction of Eight (08 Nos) Stations i.e., Elevated Interchange (1 No), Elevated (3 Nos.) and At-Grade (4 Nos) BSRP Stations of Corridor-2 at Benniganahalli, Kasturi Nagar, Seva Nagar, Banaswadi, Nagawara, Kanaka Nagar, Hebbal, Mathikere, including Civil, Structural, Entry / Exit Structure, Steel Foot Over Bridge (FOB), Roof Structures, Pre-Engineered Building(PEB) Works, Architectural finishes, Plumbing, Facade, Electrical and Mechanical(E&M) Works and Detailed Design & Consultancy (DDC) with all allied works for Bengaluru Suburban Rail Project” (BSRP)”. The agreement for this work was executed on 31.12.2024 with M/s. NCC Limited (Currently known as M/s. NCC Limited) . The completion period of this package is 24 months.

1 Kasturi Nagar



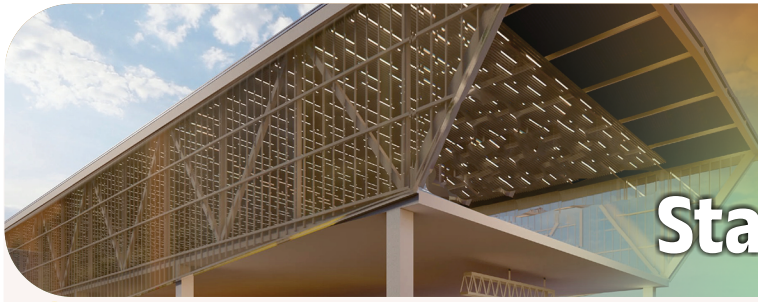
Description	Preliminary Works	Raft PCC	Raft RCC	Pier
Scope	205	205	205	26
Completed	205	205	205	26
Percentage of Completion	100%	100%	100%	100%

2 Sevanagar



Description	Preliminary Works	Raft PCC	Raft RCC	Pier
Scope	205	205	205	26
Completed	In progress	Yet to start	Yet to start	Yet to start
Percentage of Completion	In progress	Yet to start	Yet to start	Yet to start





(Contd...)

Station Works Progress

3 Banaswadi

Description	Preliminary Works	Raft PCC	Raft RCC	Pier
Scope	205	205	205	26
Completed	205	100	56	Yet to start
Percentage of Completion	100%	49%	27%	Yet to start



4 Hebbal

Description	Preliminary Works	Raft PCC	Raft RCC	Pier
Scope	205	205	205	26
Completed	205	60	21	Yet to start
Percentage of Completion	100%	30%	10%	Yet to start

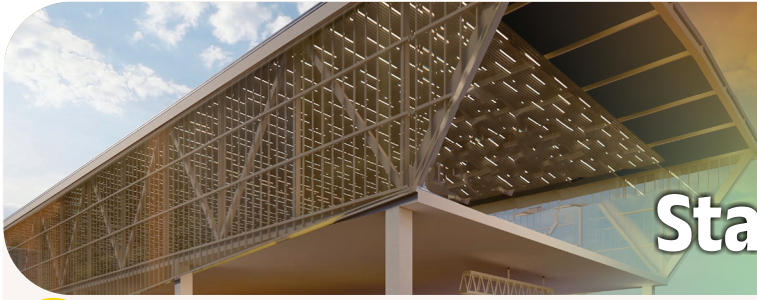


Package C2B: There are Four (04 Nos.) stations i.e., Elevated (1 No.), Elevated Interchange (1 No.) and At-Grade (2 Nos.) BSRP Stations of Corridor-2 at Yesvantpur, Shettyhalli, Myadarahalli and Chikkabanavara, including Elevated viaduct of approx. 500m length with down ramp towards Soladevanahalli depot, including Civil, Structural, Entry / Exit Structure, Steel Foot Over Bridge (FOB), Roof Structures, PEB Works, Architectural finishes, Plumbing, Façade, E&M Works and DDC with all allied works for Bengaluru Suburban Rail Project" (BSRP). The agreement for this work was executed on 23.04.2025 with M/s. ITD Cementation India Ltd. (Currently known as M/s. CEMINDIA projects Ltd.). The completion period of this package is 24 months.

5 Yesvantpur (Elevated Interchange for C2 & C1)

Description	Preliminary Works (Rmt.)	D-Wall (Nos.)	Barret Column (Nos.)	Ground Floor Slab PCC (Rmt.)	Gound Floor raft Completed (Rmt.)	Column Ground floor to Concourse (Nos.)
Scope	205	108	55	205	205	92
Completed	205	84	45	127	107.9	7
Percentage of Completion	100%	77%	81.81%	61.95%	52.63%	7.60%





(Contd...)

Station Works Progress

6 Shettyhalli

Description	Preliminary Works (Rmt.)	Ground Floor Slab PCC (Rmt.)	Gound Floor raft Completed (Rmt.)	Retaining wall (Rmt.)	Column Ground floor to Concourse (Nos.)	Platform wall (Rmt.)
Scope	205	205	205	205	32	615
Completed	205	160.3	126.3	93.4	10	183
Percentage of Completion	100%	78%	61.60%	45.56%	31.25%	30.73%



7 Myadarahalli

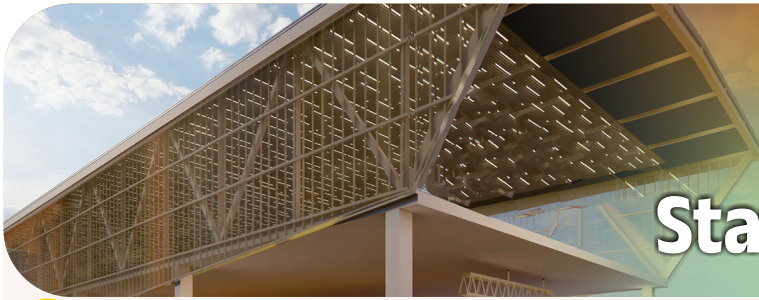
Description	Preliminary Works (Rmt.)	Ground Floor Slab PCC (Rmt.)	Gound Floor raft Completed (Rmt.)	Retaining wall (Rmt.)	Column Ground floor to Concourse. (Nos.)	Platform wall (Rmt.)	Combined Footing (Nos.)
Scope	205	93.12	93.12	205	32	1230	7
Completed	205	93.12	93.12	180	6	243	1
Percentage of Completion	100%	100%	100%	88%	19%	20%	14%



8 Chikkabanavara

Description	Preliminary Works (Rmt.)	Ground Floor Slab PCC (Rmt.)	Gound Floor raft Completed (Rmt.)	Column Ground floor to Concourse (Nos.)
Scope	205	205	205	11
Completed	205	95	80	1
Percentage of Completion	100%	46.34%	39.02%	9.09%

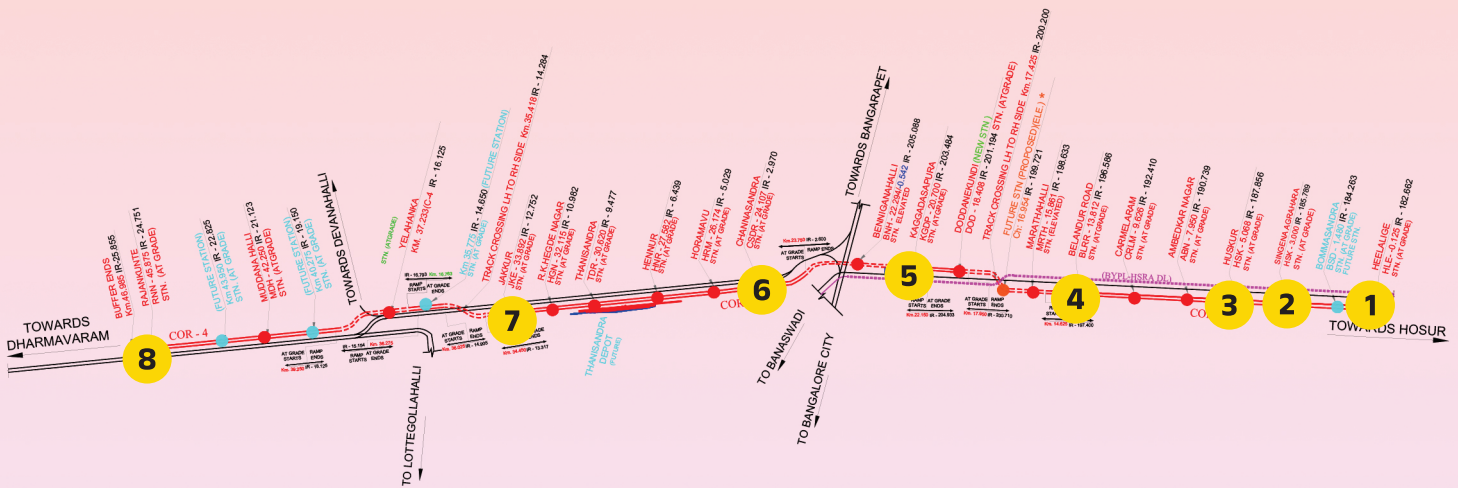




(Contd...)

Station Works Progress

Corridor 4/KANAKA LINE: Station works Packages C4A & C4B



The foundation work for the Huskur station is nearing completion and column works are in progress. More than 50% of the foundation is completed in Bellandur station and the excavation for the foundation commenced in Kaggdasapura, Carmelaram stations and Singenaagrahara Stations. The piling rig mobilized for Heelalige station. The casting yard and batching plant works are also in progress.

<p>1 Heelalige</p>	<p>2 Singena Agrahara</p>	<p>3 Huskur</p>	<p>4 Bellandur Road</p>
<p>The piling works for the Jakkur station are in progress and 50% piles are completed. The retaining wall for the Rajanakunte station are in progress and the foundation works are in progress. The excavation for the Channasandra station and site clearing work for the Horamavu & Mudanahalli stations are in progress.</p>			
<p>5 Kaggadasapura</p>	<p>6 Channasandra</p>	<p>7 Jakkur</p>	<p>8 Rajanakunte</p>

Works Progress Updates & Procurement

CORRIDOR-1

- Alignment of the Corridor C1, Sampige Line (Majestic to Devanahalli stretch is approved by Railways.
- Site Feasibility for construction works with respect to the Approved alignment is being investigated to identify utilities/infringements in two stretches Majestic to Yelahanka & Yelahanka to Devanahalli.
- Part Viaduct Elevated works (Yeshwanthapur BSRP station up to Indian Railways Yard - Tumkur side) which are also part works of Corridor 1 will be carried out along with C2 corridor, Mallige line in Package 1.
- Yeshwanthapur station, being interchange station, integrates C1 & C2 corridor at different levels within the same building and construction works are in progress.
- Part C1 corridor, near Yelahanka station being Interchange station, integrated with C4 corridor, Kanaka Line (between Jakkur to Rajankunte) works will be taken up along with the C4 corridor for which the land acquisition is in progress.

CORRIDOR-3

- Alignment of the Corridor C3, Parijatha Line (Kengeri to Whitefield) is approved by Railways.
- Land acquisition process will start once other 3 corridors land acquisition are completed.

PROCUREMENT

C2 Corridor –Mallige Line (Benniganahalli to Chikkabanavara)

Tender in 3 packages has been invited for the following stretches

- Pkg 3 - At Grade works : Yeshwanthput to Chikbanavara
- Pkg 2 _ At Grade works : Benniganhalli to Hebbal
- Pkg 1: Elevated works :All elevated works Between Benniganhalli to Chikbanavara (incl Benniganhalli, Mathikere double decker Yeshwanthapur) – Pkg 1
- Financial bids have been opened and have been initiated for necessary approval.

C4 Corridor –Kanaka Line (Heelalige to Rajankunte):

Tenders are planned to be invited in 4 packages as follows:

- Pkg 1 – Benniganhalli to Jakkur
- Pkg 2 _ Heelalige to Bellandur
- Pkg 3 - Bellandur to Benniganhalli
- Pkg 4 - Jakkur to Rajanakunte

BSRP Depot at SOLADEVANHALLI : Tender Documents are being reviewed and will be initiated for Administrative approval for inviting Tender for Soladevanahalli Depot



PROGRAMS AND INSPECTIONS



K-RIDE Distributes Social Security Insurance Certificates to Project-Affected Persons in Corridor-2 of BSRP

On 11th February 2026, Shri Lakshman Singh, Managing Director, Rail Infrastructure Development Company (Karnataka) Limited (K-RIDE), distributed Social Security Term Insurance Certificates and extended Social Security benefits to project-affected persons (PAPs), slum dwellers, squatters and the workforce along Corridor-2 during an Orientation Programme on Skill Development and Livelihood Restoration held today at Yeshwantapur. Shri Awadesh Mehta, Director (Business Development & Finance), K-RIDE and Shri Bhaskar Chakravarthy, Convenor, State Level Bankers Committee were also present at the event.

In his address, the Managing Director emphasised the integration of social safeguards with infrastructure development. He stated that the Bengaluru Suburban Railway Project (BSRP) not only aims to improve urban mobility, reduce congestion and emissions and enhance regional connectivity but also ensures fair compensation, social security coverage and livelihood restoration for project-affected communities. He appreciated the cooperation extended by the PAPs and stressed the importance of timely project completion in the larger public interest.



On February 25th 2026, Managing Director, K-RIDE, Er. Lakshman Singh, IRSE, delivered a presentation on "Building Tomorrow's Cities with Integrated Rail Network" at Concrete Panorama & Deminar 2026, organized by the Indian Concrete Institute, Bengaluru Centre.

His address highlighted the critical role of integrated rail systems in enabling sustainable urban growth and future-ready infrastructure. K-RIDE remains committed to shaping resilient, connected cities through transparent rail solutions.

PROGRAMS AND INSPECTIONS



On 7th February 2026, Shri Lakshman Singh, MD, K-RIDE, graced the 'IGBC Green Crusader Awards 2026' Ceremony as Guest of Honour at the Green Karnataka Summit, held in Bengaluru. He was felicitated for his leadership in advancing sustainable and climate-resilient infrastructure in Karnataka.

On the occasion, he shared the vision of the BSRP, the thought behind naming its 4 corridors after regional flowers and how the project will transform travel into safe, efficient & eco-friendly mobility for millions.



In line with its motto of Citizen-Centric Urban Mobility, K-RIDE participated in the Bengaluru Mobility Federation Stakeholders' Workshop, engaging with citizens and mobility experts on integrated urban transport solutions. Dr. Narendra, GM (Design & Planning), briefed participants on the progress of BSRP Corridor-2 and its stations, followed by an interactive Q&A session addressing citizen queries.



On February 23rd 2026, A Joint Inspection of the Sevanagar flyover (at-grade portion) & Mohan Kumar road, Mathikere (elevated portion) of BSRP corridor-2 was held by Shri M. Maheshwar Rao, Chief Commissioner, Greater Bengaluru Authority (GBA) & Shri Lakshman Singh, MD, KRIDE

Various key issues were discussed for quick action: - Sevanagar flyover ramp towards Kasturinagar which is infringing C-2 alignment, full utilization of service road by clearing obstructions hindering access to viaduct works at Mattikere will be cleared Budget aspects of 1.6Km Double Decker viaduct

The Chief Commissioner, extended complete support to the efforts of KRIDE for timely completion of BSRP in the best interest of public.

Social and Environmental Management

Social Initiatives

The Social Environment Monitoring Unit (SEMU) continued to facilitate project progress through coordinated efforts in social safeguards, compensation processing, environmental compliance, and safety monitoring. Significant progress was achieved in structural valuation and Compensation & Resettlement (C&R) activities across Corridors 2 and 4, with the majority of structures assessed and several compensation cases processed. Documentation and verification for both title holders and non-title holders were advanced, while financial inclusion support enabled affected squatters to open zero-balance bank accounts and access social security benefits. These efforts contributed to the voluntary self-relocation of several squatters/slum dwellers, enabling clearance of project hindrances and handover of land for construction activities.

KRIDE also strengthened stakeholder engagement through public consultations, awareness programmes, and livelihood orientation sessions for project-affected persons. Environmental and safety initiatives included regular SHE meetings, labour camp and site inspections, and awareness programmes such as Road Safety Week and environmental protection training. Compliance activities related to forest clearances, compensatory afforestation, tree translocation, and monitoring of EHS standards were also undertaken to ensure that project implementation aligns with environmental regulations and worker safety requirements.



Emergency Preparedness & Response



First Aid Training



Public Consultation Sevanagar



Safety Health & Environmental (SHE) Meeting



Safety Training

Compensatory Afforestation

As part of its commitment to sustainable infrastructure and environmental stewardship, K-RIDE has undertaken large-scale Compensatory Afforestation of planting 30,000 saplings in 8 blocks of NPKL layout in association with the Bangalore Development Authority (BDA) and 57,000 saplings on NICE Road periphery, GKVK biodiversity park, Bommanahalli layout area with Bruhat Bengaluru Mahanagara Palike (BBMP) now Greater Bengaluru Authority (GBA) Forest Division—reinforcing that infrastructure expansion and ecological responsibility must go hand in hand.

KRIDE has gone an extra mile for developing a patch of barren land into Miyawaki Forest with the full support and enthusiastic approach of officials of BDA-Forest wing. The development of Miyawaki is spread across nearly 3 hectares with around 30,000 flora of native ethnomedicinal, and indigenous, including ecologically significant and Rare, Endangered, and Threatened (RET) species, for evolving into a biodiversity-rich urban green lung space and a replicable model of ecological restoration integrating watershed, water body restoration, water recycling and groundwater recharge structure. These activities reflect K-RIDE's endurance and commitment to not only developing urban mobility project but also considers going hand in hand with nature-based solutions.

Miyawaki Plantation is an afforestation technique developed by Japanese botanist Akira Miyawaki. The method focuses on creating dense, native, multi-layered forests in small land parcels, enabling rapid forest growth and ecological restoration.

The Miyawaki plantation technique is an effective and sustainable approach to rapid afforestation and ecological restoration. By creating self-sustaining mini-forests using native species, it supports long-term environmental resilience, biodiversity conservation, and climate mitigation goals.

The Miyawaki method is based on the principles of Use of native species, High-density plantation, Multi-layered structure, Soil preparation, Minimal maintenance.

